

## Kallistatin Polyclonal Antibody

<b>Catalog No :</b>	YT5216
<b>Reactivity :</b>	Human
<b>Applications :</b>	WB;IHC;IF;ELISA
<b>Target :</b>	Kallistatin
<b>Gene Name :</b>	SERPINA4
<b>Protein Name :</b>	Kallistatin
<b>Human Gene Id :</b>	5267
<b>Human Swiss Prot No :</b>	P29622
<b>Immunogen :</b>	The antiserum was produced against synthesized peptide derived from the Internal region of human SERPINA4. AA range:161-210
<b>Specificity :</b>	Kallistatin Polyclonal Antibody detects endogenous levels of Kallistatin protein.
<b>Formulation :</b>	Liquid in PBS containing 50% glycerol, 0.5% BSA and 0.02% sodium azide.
<b>Source :</b>	Polyclonal, Rabbit,IgG
<b>Dilution :</b>	WB 1:500 - 1:2000. IHC: 1:100-300 ELISA: 1:20000.. IF 1:50-200
<b>Purification :</b>	The antibody was affinity-purified from rabbit antiserum by affinity-chromatography using epitope-specific immunogen.
<b>Concentration :</b>	1 mg/ml
<b>Storage Stability :</b>	-15°C to -25°C/1 year(Do not lower than -25°C)
<b>Observed Band :</b>	47kD
<b>Background :</b>	function:Inhibits human amidolytic and kininogenase activities of tissue kallikrein. Inhibition is achieved by formation of an equimolar, heat- and SDS-

stable complex between the inhibitor and the enzyme, and generation of a small C-terminal fragment of the inhibitor due to cleavage at the reactive site by tissue kallikrein.,miscellaneous:Heparin blocks kallistatin's complex formation with tissue kallikrein and abolishes its inhibitory effect on tissue kallikrein's activity.,PTM:The N-terminus is blocked.,similarity:Belongs to the serpin family.,subunit:Monomer and some homodimers.,tissue specificity:Expressed by the liver and secreted in plasma.,

**Function :**

function:Inhibits human amidolytic and kininogenase activities of tissue kallikrein. Inhibition is achieved by formation of an equimolar, heat- and SDS-stable complex between the inhibitor and the enzyme, and generation of a small C-terminal fragment of the inhibitor due to cleavage at the reactive site by tissue kallikrein.,miscellaneous:Heparin blocks kallistatin's complex formation with tissue kallikrein and abolishes its inhibitory effect on tissue kallikrein's activity.,PTM:The N-terminus is blocked.,similarity:Belongs to the serpin family.,subunit:Monomer and some homodimers.,tissue specificity:Expressed by the liver and secreted in plasma.,

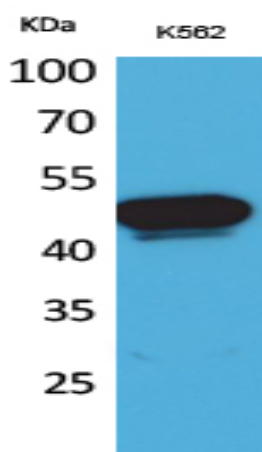
**Subcellular Location :**

Secreted.

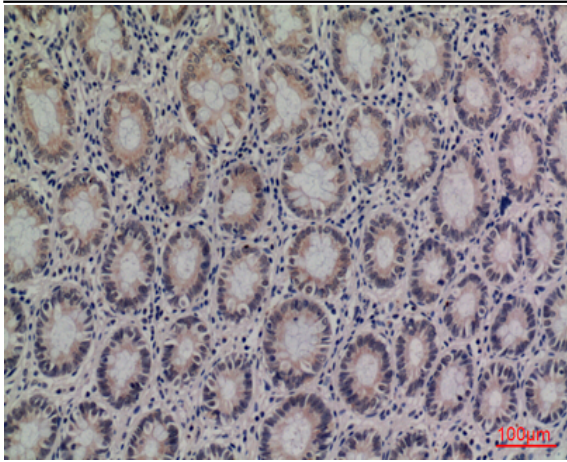
**Expression :**

Expressed by the liver and secreted in plasma.

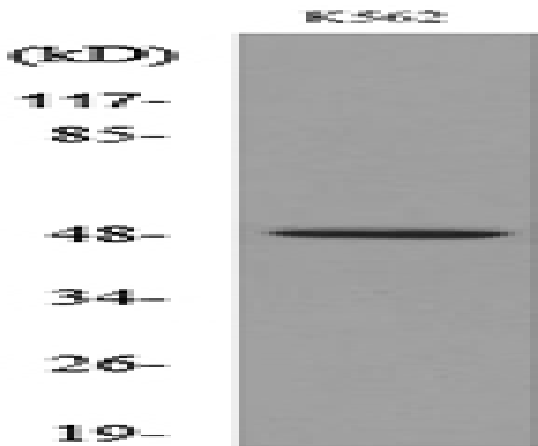
## Products Images



Western Blot analysis of K562 cells using Kallistatin Polyclonal Antibody. Secondary antibody(catalog#:RS0002) was diluted at 1:20000



Immunohistochemical analysis of paraffin-embedded human colon, antibody was diluted at 1:100



Western blot analysis of lysate from K562 cells, using SERPINA4 Antibody.