

## IL-1RII Polyclonal Antibody

<b>Catalog No :</b>	YT5470
<b>Reactivity :</b>	Human;Rat;Mouse;
<b>Applications :</b>	WB;IHC;IF;ELISA
<b>Target :</b>	IL-1RII
<b>Fields :</b>	>>Cytokine-cytokine receptor interaction;>>Hematopoietic cell lineage;>>Amoebiasis;>>Human T-cell leukemia virus 1 infection;>>Transcriptional misregulation in cancer;>>Prostate cancer;>>Fluid shear stress and atherosclerosis
<b>Gene Name :</b>	IL1R2
<b>Protein Name :</b>	Interleukin-1 receptor type 2
<b>Human Gene Id :</b>	7850
<b>Human Swiss Prot No :</b>	P27930
<b>Mouse Swiss Prot No :</b>	P27931
<b>Immunogen :</b>	The antiserum was produced against synthesized peptide derived from the Internal region of human IL1R2. AA range:141-190
<b>Specificity :</b>	IL-1RII Polyclonal Antibody detects endogenous levels of IL-1RII protein.
<b>Formulation :</b>	Liquid in PBS containing 50% glycerol, 0.5% BSA and 0.02% sodium azide.
<b>Source :</b>	Polyclonal, Rabbit,IgG
<b>Dilution :</b>	WB 1:500 - 1:2000. IHC: 1:100-1:300. ELISA: 1:20000.. IF 1:50-200
<b>Purification :</b>	The antibody was affinity-purified from rabbit antiserum by affinity-chromatography using epitope-specific immunogen.
<b>Concentration :</b>	1 mg/ml

**Storage Stability :** -15°C to -25°C/1 year(Do not lower than -25°C)

**Observed Band :** 43kD

**Cell Pathway :** MAPK\_ERK\_Growth;MAPK\_G\_Protein;Cytokine-cytokine receptor interaction;Hematopoietic cell lineage;

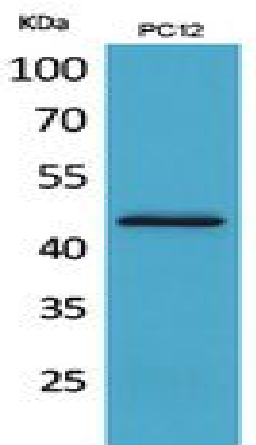
**Background :** The protein encoded by this gene is a cytokine receptor that belongs to the interleukin 1 receptor family. This protein binds interleukin alpha (IL1A), interleukin beta (IL1B), and interleukin 1 receptor, type I(IL1R1/IL1RA), and acts as a decoy receptor that inhibits the activity of its ligands. Interleukin 4 (IL4) is reported to antagonize the activity of interleukin 1 by inducing the expression and release of this cytokine. This gene and three other genes form a cytokine receptor gene cluster on chromosome 2q12. Alternative splicing results in multiple transcript variants and protein isoforms. Alternative splicing produces both membrane-bound and soluble proteins. A soluble protein is also produced by proteolytic cleavage. [provided by RefSeq, May 2012],

**Function :** function:Receptor for interleukin-1 alpha (IL-1A), beta (IL-1B), and interleukin-1 receptor antagonist protein (IL-1ra).,similarity:Belongs to the interleukin-1 receptor family.,similarity:Contains 3 Ig-like C2-type (immunoglobulin-like) domains.,

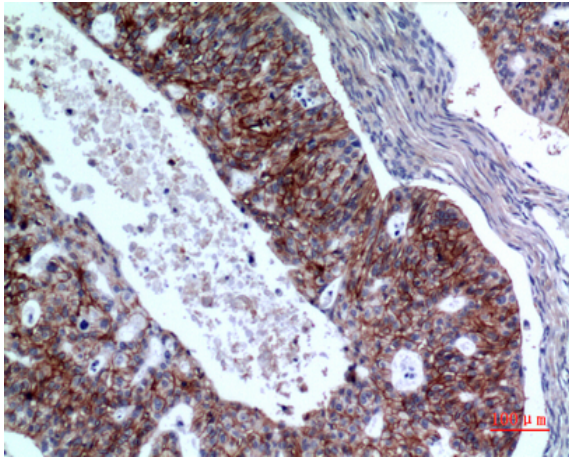
**Subcellular Location :** [Isoform Short]: Secreted .; [Isoform Long]: Cell membrane; Single-pass type I membrane protein.

**Expression :** B-cell,Colon,Ovary,

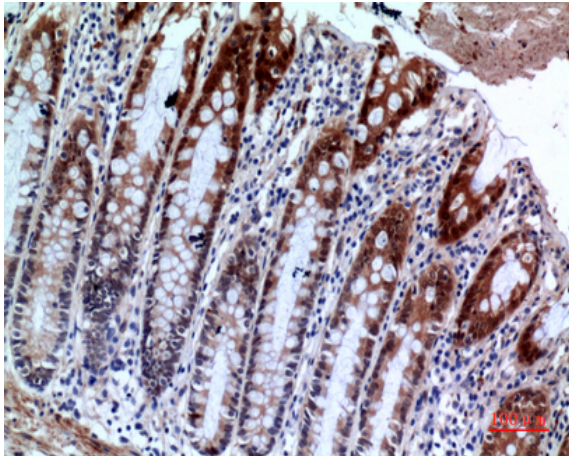
## Products Images



Western Blot analysis of PC12 cells using IL-1RII Polyclonal Antibody. Secondary antibody(catalog#:RS0002) was diluted at 1:20000



Immunohistochemical analysis of paraffin-embedded human-Ovarian-cancer, antibody was diluted at 1:100



Immunohistochemical analysis of paraffin-embedded human-colon, antibody was diluted at 1:100