

PSG1 Polyclonal Antibody

Catalog No :	YT5253
Reactivity :	Human
Applications :	WB;IHC;IF;ELISA
Target :	PSG1
Gene Name :	PSG1
Protein Name :	Pregnancy-specific beta-1-glycoprotein 1
Human Gene Id :	5669
Human Swiss Prot No :	P11464
Immunogen :	The antiserum was produced against synthesized peptide derived from the Internal region of human PSG1. AA range:221-270
Specificity :	PSG1 Polyclonal Antibody detects endogenous levels of PSG1 protein.
Formulation :	Liquid in PBS containing 50% glycerol, 0.5% BSA and 0.02% sodium azide.
Source :	Polyclonal, Rabbit,IgG
Dilution :	WB 1:500 - 1:2000. IHC: 1:100-300 ELISA: 1:20000.. IF 1:50-200
Purification :	The antibody was affinity-purified from rabbit antiserum by affinity-chromatography using epitope-specific immunogen.
Concentration :	1 mg/ml
Storage Stability :	-15°C to -25°C/1 year(Do not lower than -25°C)
Observed Band :	46kD
Background :	The human placenta is a multihormonal endocrine organ that produces hormones, enzymes, and other molecules that support fetal survival and

development. Pregnancy-specific beta-1-glycoprotein (PSBG, PSG) is a major product of the syncytiotrophoblast, reaching concentrations of 100 to 290 mg/l at term in the serum of pregnant women (Horne et al., 1976 [PubMed 971765]). PSG is a member of the immunoglobulin (Ig) superfamily (Watanabe and Chou, 1988 [PubMed 3257488]; Streydio et al., 1988 [PubMed 3260773]).[supplied by OMIM, Oct 2009],

Function :

developmental stage:PSBG are produced in high quantity during pregnancy.,similarity:Belongs to the immunoglobulin superfamily. CEA family.,similarity:Contains 1 Ig-like V-type (immunoglobulin-like) domain.,similarity:Contains 3 Ig-like C2-type (immunoglobulin-like) domains.,

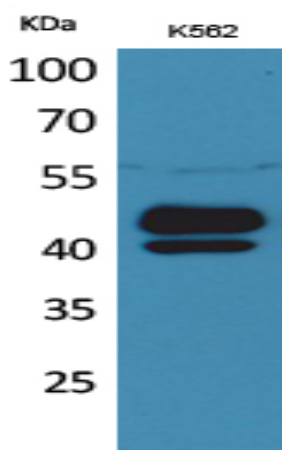
Subcellular

Secreted .

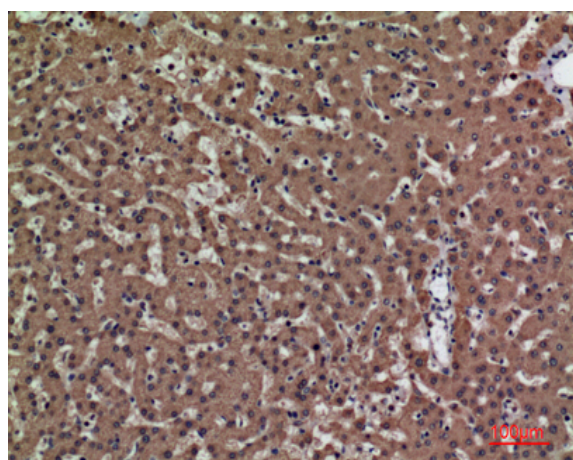
Location :**Expression :**

Liver,Placenta,

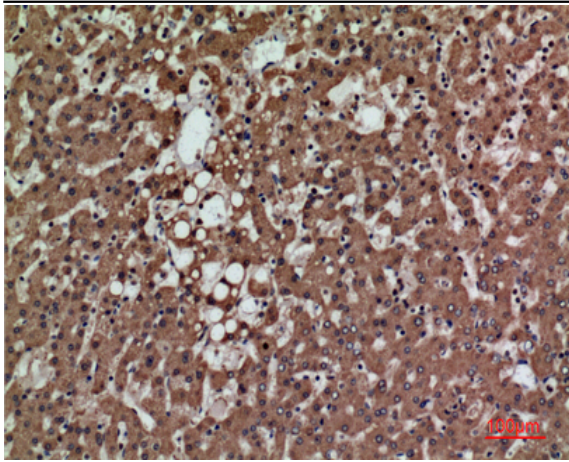
Products Images



Western Blot analysis of K562 cells using PSG1 Polyclonal Antibody. Secondary antibody(catalog#:RS0002) was diluted at 1:20000



Immunohistochemical analysis of paraffin-embedded human-liver, antibody was diluted at 1:100



Immunohistochemical analysis of paraffin-embedded human-liver, antibody was diluted at 1:100