

CD85g Polyclonal Antibody

Catalog No :	YT5258
Reactivity :	Human
Applications :	WB;IHC;IF;ELISA
Target :	CD85g
Fields :	>>Osteoclast differentiation;>>B cell receptor signaling pathway
Gene Name :	LILRA4
Protein Name :	Leukocyte immunoglobulin-like receptor subfamily A member 4
Human Gene Id :	23547
Human Swiss Prot No :	P59901
Immunogen :	The antiserum was produced against synthesized peptide derived from the Internal region of human LILRA4. AA range:391-440
Specificity :	CD85g Polyclonal Antibody detects endogenous levels of CD85g protein.
Formulation :	Liquid in PBS containing 50% glycerol, 0.5% BSA and 0.02% sodium azide.
Source :	Polyclonal, Rabbit,IgG
Dilution :	WB 1:500 - 1:2000. IHC: 1:100-300 ELISA: 1:20000.. IF 1:50-200
Purification :	The antibody was affinity-purified from rabbit antiserum by affinity-chromatography using epitope-specific immunogen.
Concentration :	1 mg/ml
Storage Stability :	-15°C to -25°C/1 year(Do not lower than -25°C)
Observed Band :	55kD

Background :

This gene encodes an immunoglobulin-like cell surface protein that is expressed predominantly on plasmacytoid dendritic cells (PDCs) and modulates the function of these cells in the immune response. Expression of this gene is downregulated by interleukin 3 (IL3). This gene is one of a cluster of highly related genes located at chromosomal region 19q13.4. [provided by RefSeq, Jan 2015],

Function :

function:May act as receptor for class I MHC antigens. Ligand binding leads to the activation of eosinophils and to the release of RNASE2, IL4 and leukotriene C4.,similarity:Contains 4 Ig-like C2-type (immunoglobulin-like) domains.,tissue specificity:Detected on eosinophils, neutrophils and monocytes.,

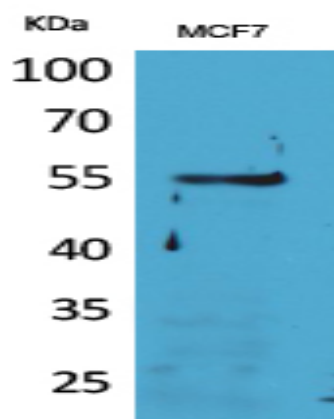
Subcellular Location :

Cell membrane ; Single-pass type I membrane protein .

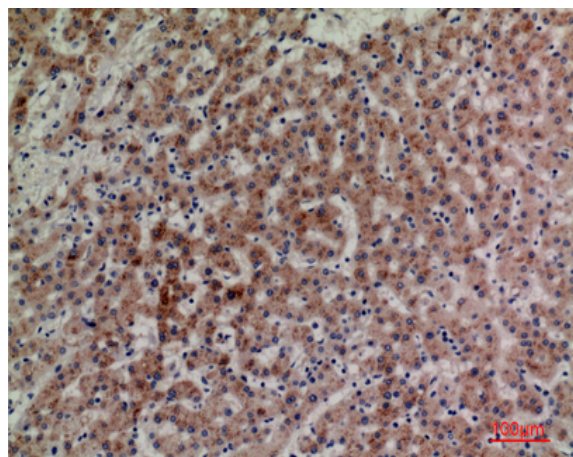
Expression :

Detected on plasmacytoid dendritic cells (at protein level). Detected on plasmacytoid dendritic cells, but not on monocytes or B cells.

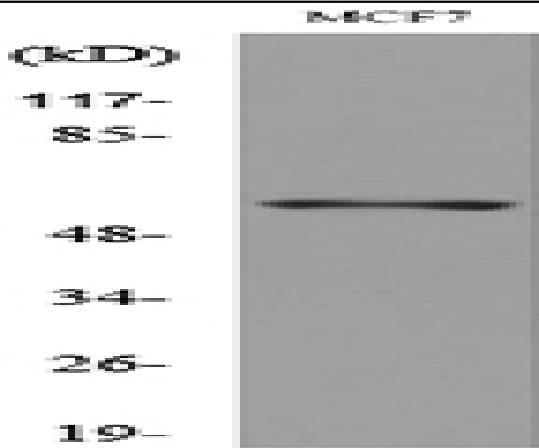
Products Images



Western Blot analysis of MCF7 cells using CD85g Polyclonal Antibody. Secondary antibody(catalog#:RS0002) was diluted at 1:20000



Immunohistochemical analysis of paraffin-embedded human-liver, antibody was diluted at 1:100



Western blot analysis of lysate from MCF7 cells, using LILRA4 Antibody.