

## Nectin 3 Polyclonal Antibody

<b>Catalog No :</b>	YT5261
<b>Reactivity :</b>	Human;Mouse;Rat
<b>Applications :</b>	WB;ELISA
<b>Target :</b>	Nectin 3
<b>Fields :</b>	>>Cell adhesion molecules;>>Adherens junction
<b>Gene Name :</b>	PVRL3
<b>Protein Name :</b>	Poliovirus receptor-related protein 3
<b>Human Gene Id :</b>	25945
<b>Human Swiss Prot No :</b>	Q9NQS3
<b>Mouse Gene Id :</b>	58998
<b>Mouse Swiss Prot No :</b>	Q9JLB9
<b>Immunogen :</b>	The antiserum was produced against synthesized peptide derived from the Internal region of human PVRL3. AA range:311-360
<b>Specificity :</b>	Nectin 3 Polyclonal Antibody detects endogenous levels of Nectin 3 protein.
<b>Formulation :</b>	Liquid in PBS containing 50% glycerol, 0.5% BSA and 0.02% sodium azide.
<b>Source :</b>	Polyclonal, Rabbit,IgG
<b>Dilution :</b>	WB 1:500 - 1:2000. ELISA: 1:20000. Not yet tested in other applications.
<b>Purification :</b>	The antibody was affinity-purified from rabbit antiserum by affinity-chromatography using epitope-specific immunogen.
<b>Concentration :</b>	1 mg/ml

**Storage Stability :** -15°C to -25°C/1 year(Do not lower than -25°C)

**Observed Band :** 60kD

**Cell Pathway :** Cell adhesion molecules (CAMs);Adherens\_Junction;

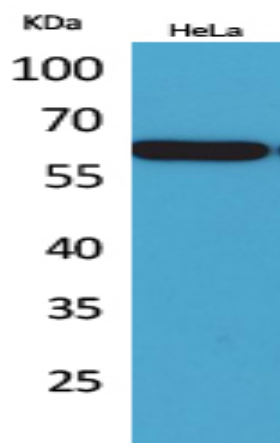
**Background :** This gene encodes a member of the nectin family of proteins, which function as adhesion molecules at adherens junctions. This family member interacts with other nectin-like proteins and with afadin, a filamentous actin-binding protein involved in the regulation of directional motility, cell proliferation and survival. This gene plays a role in ocular development involving the ciliary body. Mutations in this gene are believed to result in congenital ocular defects. Alternative splicing results in multiple transcript variants. [provided by RefSeq, Aug 2011],

**Function :** function:Plays a role in cell-cell adhesion through heterophilic trans-interactions with nectin-like proteins or nectins, such as trans-interaction with PVRL2/nectin-2 at Sertoli-spermatid junctions. Trans-interaction with PVR induces activation of CDC42 and RAC small G proteins through common signaling molecules such as SRC and RAP1. Also involved in the formation of cell-cell junctions, including adherens junctions and synapses. Induces endocytosis-mediated down-regulation of PVR from the cell surface, resulting in reduction of cell movement and proliferation. Plays a role in the morphology of the ciliary body.,similarity:Belongs to the nectin family.,similarity:Contains 1 Ig-like V-type (immunoglobulin-like) domain.,similarity:Contains 2 Ig-like C2-type (immunoglobulin-like) domains.,subunit:Cis- and trans-homodimer. Can form trans-heterodimers with PVRL1/nectin-1, PVRL2/nectin-2, PVR

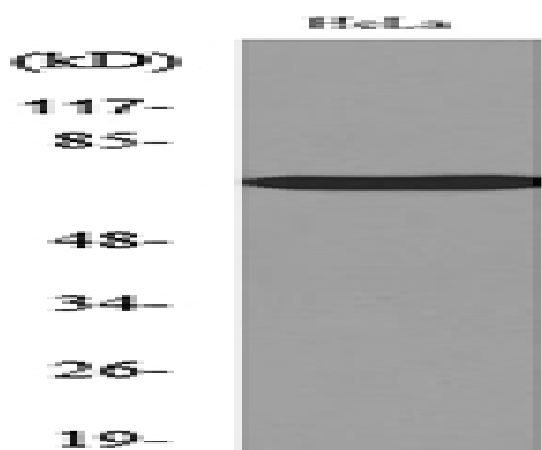
**Subcellular Location :** Cell membrane ; Single-pass membrane protein . Cell junction, synapse, postsynaptic cell membrane .

**Expression :** Predominantly expressed in testis and placenta as well as in many cell lines, including epithelial cell lines.

## Products Images



Western Blot analysis of HeLa cells using Nectin 3 Polyclonal Antibody. Secondary antibody(catalog#:RS0002) was diluted at 1:20000



Western blot analysis of lysate from HeLa cells, using PVRL3 Antibody.