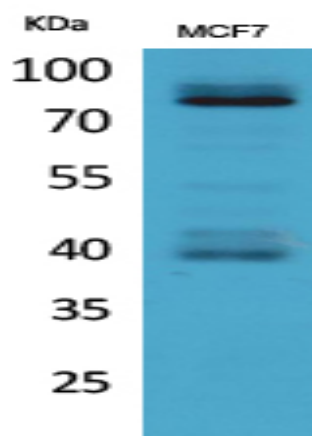


IL-1RI Polyclonal Antibody

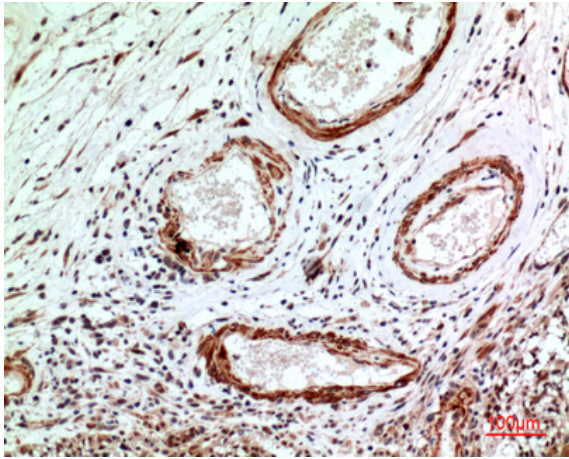
Catalog No :	YT5263
Reactivity :	Human;Rat;Mouse;
Applications :	WB;IHC;IF;ELISA
Target :	IL-1RI
Fields :	>>MAPK signaling pathway;>>Cytokine-cytokine receptor interaction;>>NF-kappa B signaling pathway;>>Osteoclast differentiation;>>Hematopoietic cell lineage;>>Th17 cell differentiation;>>Inflammatory mediator regulation of TRP channels;>>Pathogenic Escherichia coli infection;>>Shigellosis;>>Amoebiasis;>>Human cytomegalovirus infection;>>Human T-cell leukemia virus 1 infection;>>Fluid shear stress and atherosclerosis
Gene Name :	IL1R1
Protein Name :	Interleukin-1 receptor type 1
Human Gene Id :	3554
Human Swiss Prot No :	P14778
Mouse Swiss Prot No :	P13504
Immunogen :	The antiserum was produced against synthesized peptide derived from the N-terminal region of human IL1R1. AA range:31-80
Specificity :	IL-1RI Polyclonal Antibody detects endogenous levels of IL-1RI protein.
Formulation :	Liquid in PBS containing 50% glycerol, 0.5% BSA and 0.02% sodium azide.
Source :	Polyclonal, Rabbit,IgG
Dilution :	WB 1:500 - 1:2000. IHC: 1:100-300 ELISA: 1:20000.. IF 1:50-200
Purification :	The antibody was affinity-purified from rabbit antiserum by affinity-chromatography using epitope-specific immunogen.

Concentration :	1 mg/ml
Storage Stability :	-15°C to -25°C/1 year(Do not lower than -25°C)
Observed Band :	75kD
Cell Pathway :	MAPK_ERK_Growth;MAPK_G_Protein;Cytokine-cytokine receptor interaction;Apoptosis_Inhibition;Apoptosis_Mitochondrial;Apoptosis_Overview;Hematopoietic cell lineage;
Background :	This gene encodes a cytokine receptor that belongs to the interleukin-1 receptor family. The encoded protein is a receptor for interleukin-1 alpha, interleukin-1 beta, and interleukin-1 receptor antagonist. It is an important mediator involved in many cytokine-induced immune and inflammatory responses. This gene is located in a cluster of related cytokine receptor genes on chromosome 2q12. [provided by RefSeq, Dec 2013],
Function :	function:Receptor for interleukin-1 alpha (IL-1A), beta (IL-1B), and interleukin-1 receptor antagonist protein (IL-1RA). Binding to the agonist leads to the activation of NF-kappa-B. Signaling involves formation of a ternary complex containing IL1RAP, TOLLIP, MYD88, and IRAK1 or IRAK2.,similarity:Belongs to the interleukin-1 receptor family.,similarity:Contains 1 TIR domain.,similarity:Contains 3 Ig-like C2-type (immunoglobulin-like) domains.,subunit:Binds IL1RAP.,
Subcellular Location :	Membrane ; Single-pass type I membrane protein . Cell membrane . Secreted .
Expression :	Expressed in T-helper cell subsets. Preferentially expressed in T-helper 1 (Th1) cells.

Products Images



Western Blot analysis of MCF7 cells using IL-1RI Polyclonal Antibody. Secondary antibody(catalog#:RS0002) was diluted at 1:20000



Immunohistochemical analysis of paraffin-embedded human-brain, antibody was diluted at 1:100