

CD307 Polyclonal Antibody

Catalog No :	YT5268
Reactivity :	Human;Mouse
Applications :	WB;IHC;IF;ELISA
Target :	CD307
Gene Name :	FCRL5
Protein Name :	Fc receptor-like protein 5
Human Gene Id :	83416
Human Swiss Prot No :	Q96RD9
Mouse Swiss Prot No :	Q68SN8
Immunogen :	The antiserum was produced against synthesized peptide derived from the Internal region of human FCRL5. AA range:191-240
Specificity :	CD307 Polyclonal Antibody detects endogenous levels of CD307 protein.
Formulation :	Liquid in PBS containing 50% glycerol, 0.5% BSA and 0.02% sodium azide.
Source :	Polyclonal, Rabbit,IgG
Dilution :	WB 1:500 - 1:2000. IHC: 1:100-300 ELISA: 1:20000.. IF 1:50-200
Purification :	The antibody was affinity-purified from rabbit antiserum by affinity-chromatography using epitope-specific immunogen.
Concentration :	1 mg/ml
Storage Stability :	-15°C to -25°C/1 year(Do not lower than -25°C)
Observed Band :	110kD

Background :

This gene encodes a member of the immunoglobulin receptor superfamily and the Fc-receptor like family. This gene and several other Fc receptor-like gene members are clustered on the long arm of chromosome 1. The encoded protein is a single-pass type I membrane protein and contains 8 immunoglobulin-like C2-type domains. This gene is implicated in B cell development and lymphomagenesis. Alternatively spliced transcript variants encoding different isoforms have been identified. [provided by RefSeq, Sep 2010],

Function :

disease:A chromosomal aberration involving FCRL5 is found in Burkitt lymphoma (BL) cell lines with 1q21 abnormalities [MIM:113970]. Duplication dup(1)(q21q32).,domain:Contains 2 copies of a cytoplasmic motif that is referred to as the immunoreceptor tyrosine-based inhibitor motif (ITIM).,function:May be involved in B-cell development and differentiation in peripheral lymphoid organs and may be useful markers of B-cell stages. May have an immunoregulatory role in marginal zone B-cells.,similarity:Contains 8 Ig-like C2-type (immunoglobulin-like) domains.,tissue specificity:Expressed in marginal zone B-cells, immunoblasts, tonsillar germinal center centrocytes and in the intraepithelial and interfollicular regions of the tonsil. Expressed in many lymphoma cell lines and on hairy cell leukemia cells. Isoform 1, isoform 3, isoform 4 and isoform 5 are detected in lymph node, spleen, bone marrow

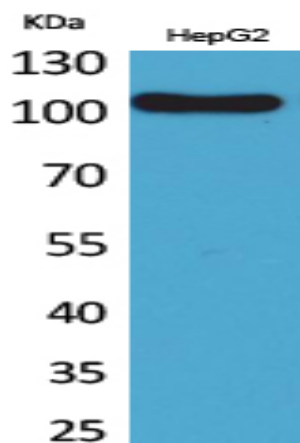
Subcellular Location :

Cell membrane ; Single-pass type I membrane protein .

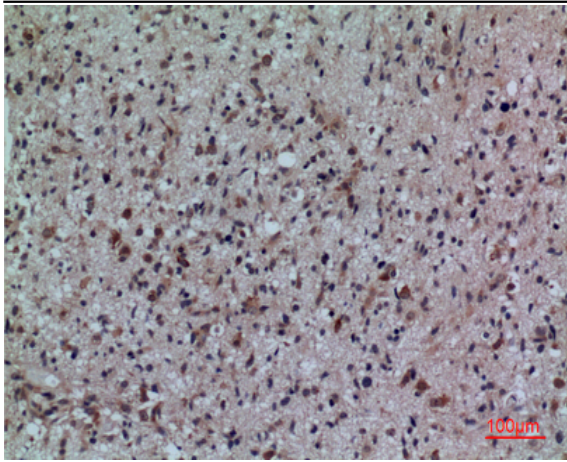
Expression :

Expressed in marginal zone B-cells, immunoblasts, tonsillar germinal center centrocytes and in the intraepithelial and interfollicular regions of the tonsil. Expressed in many lymphoma cell lines and on hairy cell leukemia cells. Isoform 1, isoform 3, isoform 4 and isoform 5 are detected in lymph node, spleen, bone marrow, and small intestine with preponderance of isoform 3. Expressed in mature and memory B-cells and down-regulated in germinal center cells (at protein level).

Products Images



Western Blot analysis of HepG2 cells using CD307 Polyclonal Antibody. Secondary antibody(catalog#:RS0002) was diluted at 1:20000



Immunohistochemical analysis of paraffin-embedded human-brain, antibody was diluted at 1:100