

## CD207 Polyclonal Antibody

<b>Catalog No :</b>	YT5275
<b>Reactivity :</b>	Human;Mouse
<b>Applications :</b>	WB;ELISA
<b>Target :</b>	CD207
<b>Gene Name :</b>	CD207
<b>Protein Name :</b>	C-type lectin domain family 4 member K
<b>Human Gene Id :</b>	50489
<b>Human Swiss Prot No :</b>	Q9UJ71
<b>Mouse Gene Id :</b>	246278
<b>Mouse Swiss Prot No :</b>	Q8VBX4
<b>Immunogen :</b>	The antiserum was produced against synthesized peptide derived from the Internal region of human CD207. AA range:61-110
<b>Specificity :</b>	CD207 Polyclonal Antibody detects endogenous levels of CD207 protein.
<b>Formulation :</b>	Liquid in PBS containing 50% glycerol, 0.5% BSA and 0.02% sodium azide.
<b>Source :</b>	Polyclonal, Rabbit,IgG
<b>Dilution :</b>	WB 1:500 - 1:2000. ELISA: 1:20000. Not yet tested in other applications.
<b>Purification :</b>	The antibody was affinity-purified from rabbit antiserum by affinity-chromatography using epitope-specific immunogen.
<b>Concentration :</b>	1 mg/ml
<b>Storage Stability :</b>	-15°C to -25°C/1 year(Do not lower than -25°C)

**Observed Band :** 38kD

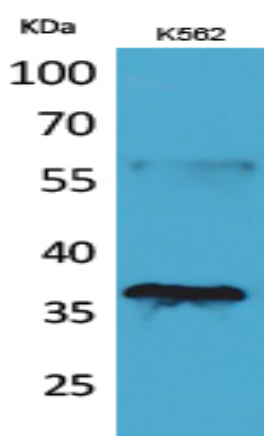
**Background :** The protein encoded by this gene is expressed only in Langerhans cells which are immature dendritic cells of the epidermis and mucosa. It is localized in the Birbeck granules, organelles present in the cytoplasm of Langerhans cells and consisting of superimposed and zippered membranes. It is a C-type lectin with mannose binding specificity, and it has been proposed that mannose binding by this protein leads to internalization of antigen into Birbeck granules and providing access to a nonclassical antigen-processing pathway. Mutations in this gene result in Birbeck granules deficiency or loss of sugar binding activity. [provided by RefSeq, Aug 2010],

**Function :** function:Calcium-dependent lectin displaying mannose-binding specificity, Induces the formation of Birbeck granules (BGs); is a potent regulator of membrane superimposition and zippering.,online information:Langerin,similarity:Contains 1 C-type lectin domain.,subcellular location:Found in Birbeck granules (BGs), which are organelles consisting of superimposed and zippered membranes.,tissue specificity:Exclusively expressed by Langerhans cells.,

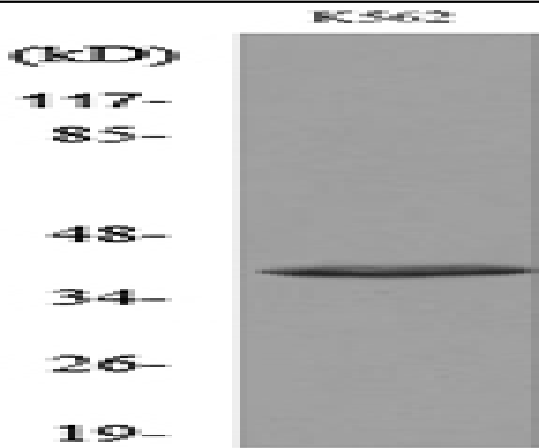
**Subcellular Location :** Membrane ; Single-pass type II membrane protein . Found in Birbeck granules (BGs), which are organelles consisting of superimposed and zippered membranes.

**Expression :** Exclusively expressed by Langerhans cells. Expressed in astrocytoma and malignant ependymoma, but not in normal brain tissues.

## Products Images



Western Blot analysis of K562 cells using CD207 Polyclonal Antibody. Secondary antibody(catalog#:RS0002) was diluted at 1:20000



Western blot analysis of lysate from K562 cells, using CD207 Antibody.