

MutS Protein Homolog 2(MSH2) (ABT-MSH2) mouse mAb

Catalog No :	YM6750
Reactivity :	Human;
Applications :	IHC;ELISA
Target :	MSH2
Fields :	>>Platinum drug resistance;>>Mismatch repair;>>Pathways in cancer;>>Colorectal cancer
Gene Name :	MSH2
Protein Name :	MutS Protein Homolog 2(MSH2)
Human Gene Id :	4436
Human Swiss Prot No :	P43246
Immunogen :	Synthesized peptide derived from human MutS Protein Homolog 2(MSH2) AA range: 600-700
Specificity :	This antibody detects endogenous levels of MSH2 protein.
Formulation :	PBS, 50% glycerol, 0.05% Proclin 300, 0.05%BSA
Source :	Mouse, Monoclonal/IgG1, kappa
Dilution :	IHC 1:50-100. ELISA 1:500-5000
Purification :	The antibody was affinity-purified from ascites by affinity-chromatography using specific immunogen.
Storage Stability :	-15°C to -25°C/1 year(Do not lower than -25°C)
Molecularweight :	105kD
Observed Band :	105kD

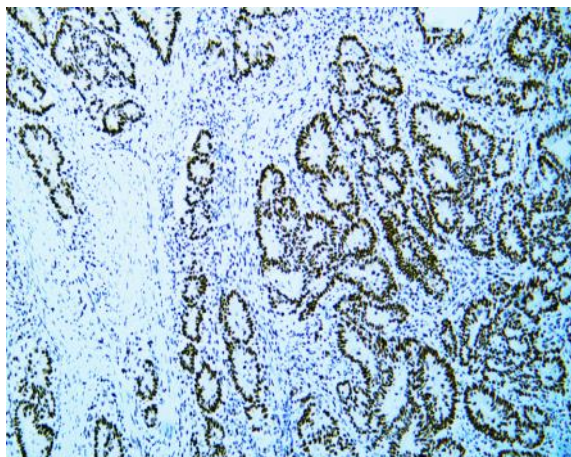
Background : This locus is frequently mutated in hereditary nonpolyposis colon cancer (HNPCC). When cloned, it was discovered to be a human homolog of the E. coli mismatch repair gene mutS, consistent with the characteristic alterations in microsatellite sequences (RER+ phenotype) found in HNPCC. Two transcript variants encoding different isoforms have been found for this gene. [provided by RefSeq, Apr 2012],

Function : disease:Defects in MSH2 are a cause of Muir-Torre syndrome (MTS) [MIM:158320]. MTS is a rare autosomal dominant disorder characterized by sebaceous neoplasms and visceral malignancy.,disease:Defects in MSH2 are a cause of susceptibility to endometrial cancer [MIM:608089].,disease:Defects in MSH2 are the cause of hereditary non-polyposis colorectal cancer type 1 (HNPCC1) [MIM:120435]. Mutations in more than one gene locus can be involved alone or in combination in the production of the HNPCC phenotype (also called Lynch syndrome). Most families with clinically recognized HNPCC have mutations in either MLH1 or MSH2 genes. HNPCC is an autosomal, dominantly inherited disease associated with marked increase in cancer susceptibility. It is characterized by a familial predisposition to early onset colorectal carcinoma (CRC) and extra-colonic cancers of the gastrointestinal, urological and femal

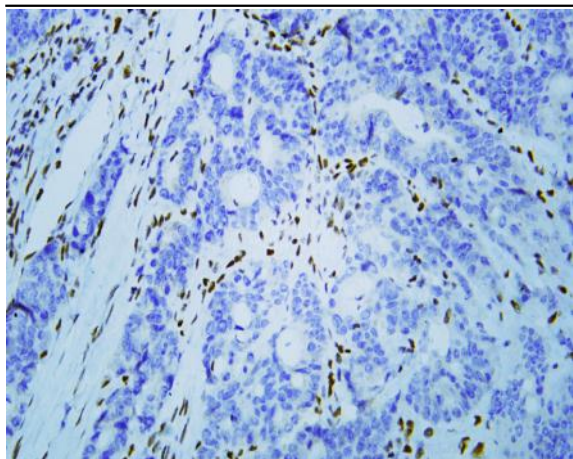
Subcellular Location : Nuclear

Expression : Ubiquitously expressed.

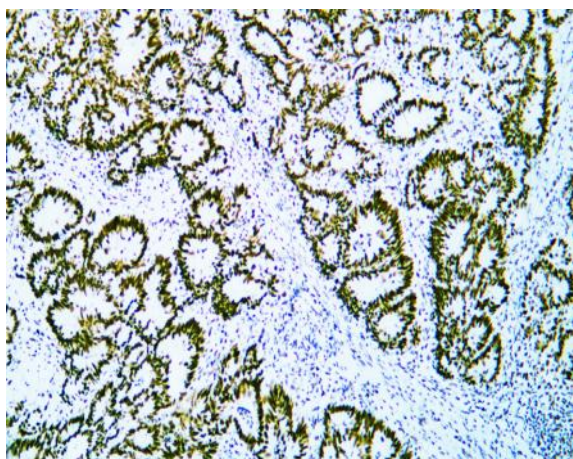
Products Images



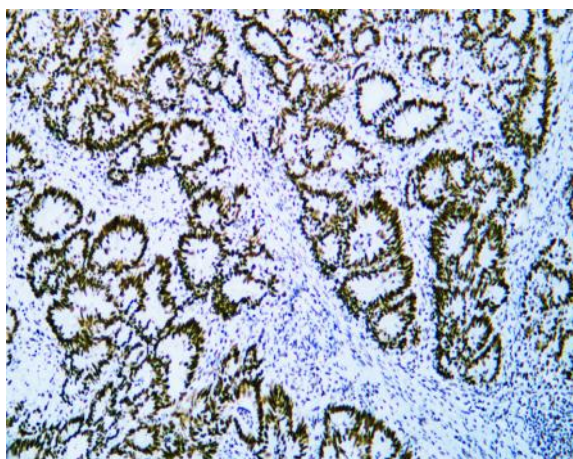
Human colon carcinoma with mSH2 expression tissue was stained with Anti-MSH2 (ABT-MSH2) Antibody



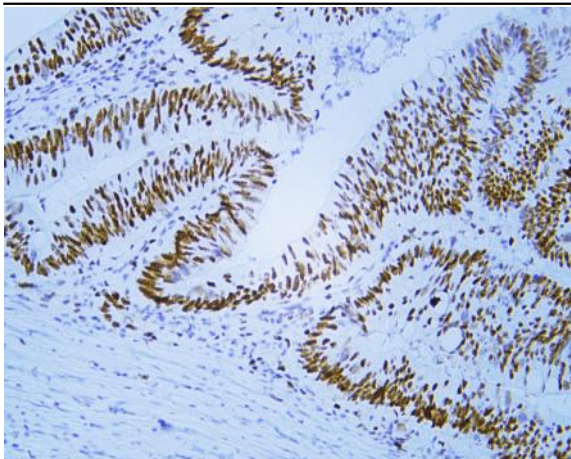
Human colon carcinoma with loss of msh2 expression tissue was stained with Anti-MSH2 (ABT-MSH2) Antibody



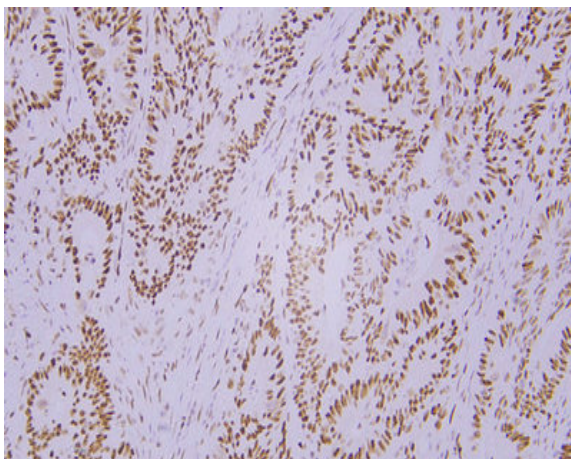
Human colon carcinoma with msh2 expression tissue was stained with Anti-MSH2 (ABT-MSH2) Antibody



Human colon carcinoma with msh2 expression tissue was stained with Anti-MSH2 (ABT-MSH2) Antibody



Human colon carcinoma with mSH2 expression tissue was stained with Anti-MSH2 (ABT-MSH2) Antibody



Immunohistochemical analysis of paraffin-embedded Colon carcinoma. 1, Antibody was diluted at 1:200(4° overnight). 2, TRIS-EDTA of pH9.0 was used for antigen retrieval. 3,Secondary antibody was diluted at 1:200(room temperature, 30min).