

CMTM6 Polyclonal Antibody

Catalog No :	YT5308
Reactivity :	Human;Mouse
Applications :	WB;IHC;IF;ELISA
Target :	CMTM6
Gene Name :	CMTM6
Protein Name :	CKLF-like MARVEL transmembrane domain-containing protein 6
Human Gene Id :	54918
Human Swiss Prot No :	Q9NX76
Mouse Gene Id :	67213
Mouse Swiss Prot No :	Q9CZ69
Immunogen :	The antiserum was produced against synthesized peptide derived from the C-terminal region of human CMTM6. AA range:131-180
Specificity :	CMTM6 Polyclonal Antibody detects endogenous levels of CMTM6 protein.
Formulation :	Liquid in PBS containing 50% glycerol, 0.5% BSA and 0.02% sodium azide.
Source :	Polyclonal, Rabbit,IgG
Dilution :	WB 1:500 - 1:2000. IHC: 1:100-1:300. ELISA: 1:20000.. IF 1:50-200
Purification :	The antibody was affinity-purified from rabbit antiserum by affinity-chromatography using epitope-specific immunogen.
Concentration :	1 mg/ml
Storage Stability :	-15°C to -25°C/1 year(Do not lower than -25°C)

Observed Band : 20kD

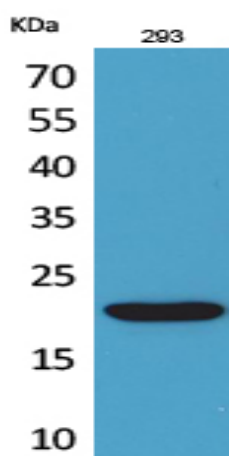
Background : This gene belongs to the chemokine-like factor gene superfamily, a novel family that is similar to the chemokine and transmembrane 4 superfamilies. This gene is one of several chemokine-like factor genes located in a cluster on chromosome 3. This gene is widely expressed in many tissues, but the exact function of the encoded protein is unknown. [provided by RefSeq, Jul 2008],

Function : similarity:Belongs to the chemokine-like factor family.,similarity:Contains 1 MARVEL domain.,tissue specificity:Expressed in the leukocytes, placenta and testis.,

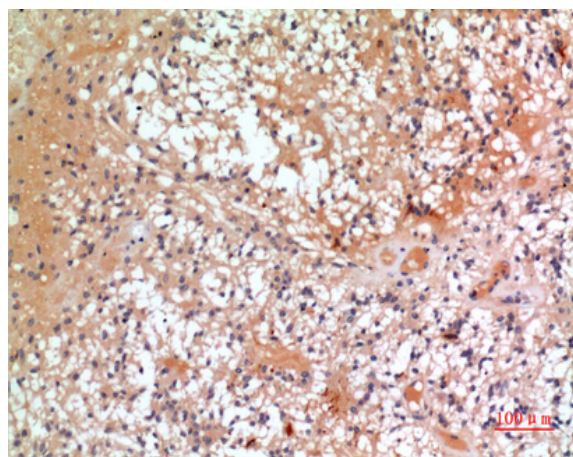
Subcellular Location : Cell membrane ; Multi-pass membrane protein . Early endosome membrane ; Multi-pass membrane protein . Recycling endosome membrane ; Multi-pass membrane protein . Co-localizes with PD-L1/CD274 in the plasma membrane and in recycling endosomes. .

Expression : Expressed in the leukocytes, placenta and testis.

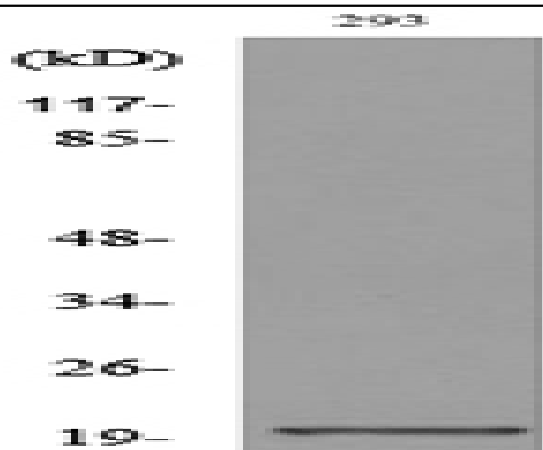
Products Images



Western Blot analysis of 293 cells using CMTM6 Polyclonal Antibody. Secondary antibody(catalog#:RS0002) was diluted at 1:20000



Immunohistochemical analysis of paraffin-embedded human-oophoroma, antibody was diluted at 1:100



Western blot analysis of lysate from 293 cells, using CMTM6 Antibody.