

ARP Polyclonal Antibody

| | |
|------------------------------|-----------------------------------------------------------------------------------------------------------------------|
| Catalog No : | YT5309 |
| Reactivity : | Human;Mouse;Rat |
| Applications : | WB;IHC;IF;ELISA |
| Target : | ARP |
| Gene Name : | MANF |
| Protein Name : | Mesencephalic astrocyte-derived neurotrophic factor |
| Human Gene Id : | 7873 |
| Human Swiss Prot No : | P55145 |
| Mouse Swiss Prot No : | Q9CXI5 |
| Rat Swiss Prot No : | P0C5H9 |
| Immunogen : | The antiserum was produced against synthesized peptide derived from the Internal region of human MANF. AA range:11-60 |
| Specificity : | ARP Polyclonal Antibody detects endogenous levels of ARP protein. |
| Formulation : | Liquid in PBS containing 50% glycerol, 0.5% BSA and 0.02% sodium azide. |
| Source : | Polyclonal, Rabbit,IgG |
| Dilution : | WB 1:500 - 1:2000. IHC: 1:100-1:300. ELISA: 1:20000.. IF 1:50-200 |
| Purification : | The antibody was affinity-purified from rabbit antiserum by affinity-chromatography using epitope-specific immunogen. |
| Concentration : | 1 mg/ml |
| Storage Stability : | -15°C to -25°C/1 year(Do not lower than -25°C) |

Observed Band : 20kD**Background :**

The protein encoded by this gene is localized in the endoplasmic reticulum (ER) and golgi, and is also secreted. Reducing expression of this gene increases susceptibility to ER stress-induced death and results in cell proliferation. Activity of this protein is important in promoting the survival of dopaminergic neurons. The presence of polymorphisms in the N-terminal arginine-rich region, including a specific mutation that changes an ATG start codon to AGG, have been reported in a variety of solid tumors; however, these polymorphisms were later shown to exist in normal tissues and are thus no longer thought to be tumor-related. [provided by RefSeq, Apr 2014],

Function :

response to unfolded protein, response to organic substance, response to protein stimulus,

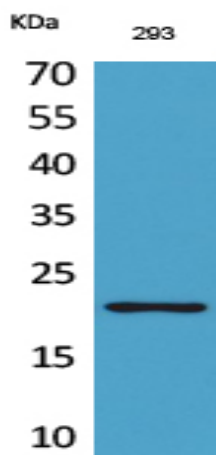
Subcellular Location :

Secreted . Endoplasmic reticulum lumen . Sarcoplasmic reticulum lumen . Retained in the endoplasmic reticulum (ER), and sarcoplasmic reticulum (SR) under normal conditions (PubMed:22637475). Up-regulated and secreted by the ER/SR in response to ER stress and hypoxia (PubMed:22637475, PubMed:29497057). .

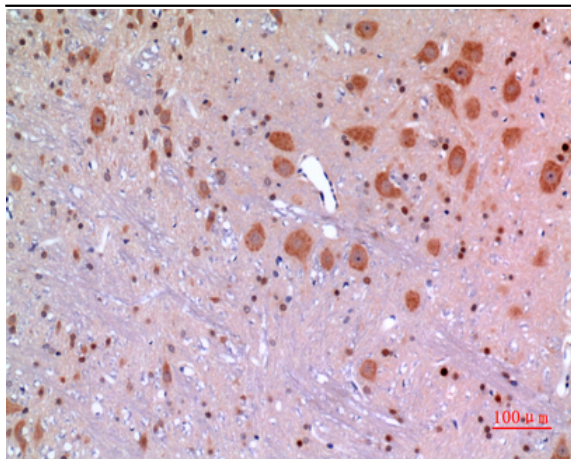
Expression :

Testis,

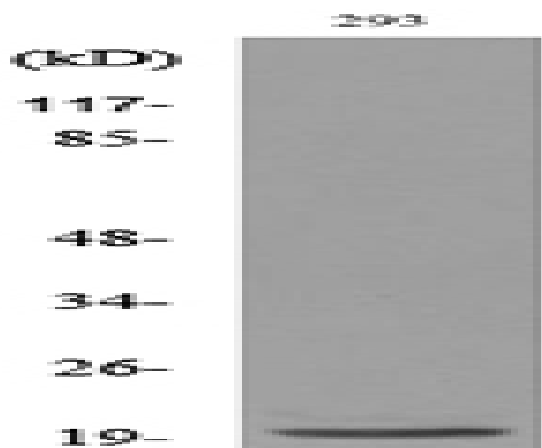
Products Images



Western Blot analysis of 293 cells using ARP Polyclonal Antibody. Secondary antibody(catalog#:RS0002) was diluted at 1:20000



Immunohistochemical analysis of paraffin-embedded rat-brain, antibody was diluted at 1:100



Western blot analysis of lysate from 293 cells, using MANF Antibody.