

Annexin VII Polyclonal Antibody

Catalog No :	YT5373
Reactivity :	Human;Mouse
Applications :	WB;IHC;IF;ELISA
Target :	Annexin VII
Fields :	>>Amyotrophic lateral sclerosis
Gene Name :	ANXA7
Protein Name :	Annexin A7
Human Gene Id :	310
Human Swiss Prot No :	P20073
Mouse Gene Id :	11750
Mouse Swiss Prot No :	Q07076
Immunogen :	The antiserum was produced against synthesized peptide derived from the Internal region of human ANXA7. AA range:271-320
Specificity :	Annexin VII Polyclonal Antibody detects endogenous levels of Annexin VII protein.
Formulation :	Liquid in PBS containing 50% glycerol, 0.5% BSA and 0.02% sodium azide.
Source :	Polyclonal, Rabbit,IgG
Dilution :	WB 1:500 - 1:2000. IHC: 1:100-1:300. ELISA: 1:20000.. IF 1:50-200
Purification :	The antibody was affinity-purified from rabbit antiserum by affinity-chromatography using epitope-specific immunogen.
Concentration :	1 mg/ml

Storage Stability : -15°C to -25°C/1 year (Do not lower than -25°C)

Observed Band : 53kD

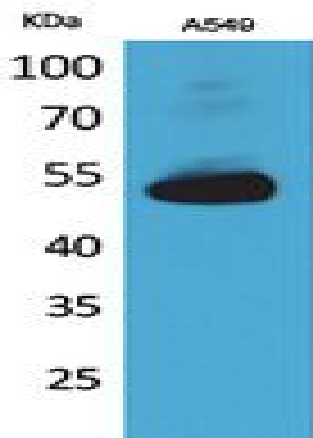
Background : Annexin VII is a member of the annexin family of calcium-dependent phospholipid binding proteins. The Annexin VII gene contains 14 exons and spans approximately 34 kb of DNA. An alternatively spliced cassette exon results in two mRNA transcripts of 2.0 and 2.4 kb which are predicted to generate two protein isoforms differing in their N-terminal domain. The alternative splicing event is tissue specific and the mRNA containing the cassette exon is prevalent in brain, heart and skeletal muscle. The transcripts also differ in their 3'-non coding regions by the use of two alternative poly(A) signals. Annexin VII encodes a protein with a molecular weight of approximately 51 kDa with a unique, highly hydrophobic N-terminal domain of 167 amino acids and a conserved C-terminal region of 299 amino acids. The latter domain is composed of alternating hydrophobic and hydrophilic segments. Structural analysis of the

Function : domain: A pair of annexin repeats may form one binding site for calcium and phospholipid., function: Calcium/phospholipid-binding protein which promotes membrane fusion and is involved in exocytosis., similarity: Belongs to the annexin family., similarity: Contains 4 annexin repeats., tissue specificity: Isoform 1 is expressed in brain, heart and skeletal muscle. Isoform 2 is more abundant in liver, lung, kidney, spleen, fibroblasts and placenta.,

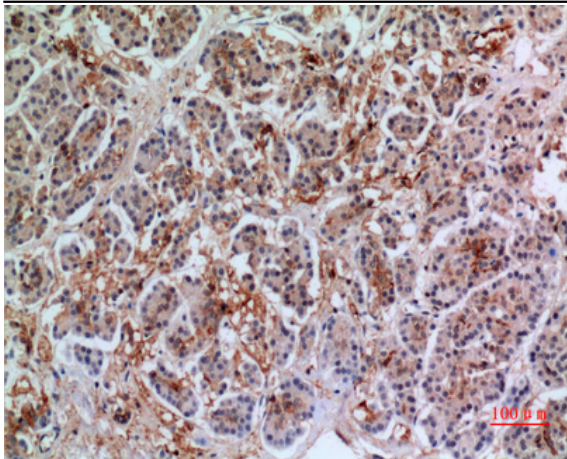
Subcellular Location : nucleus, nuclear envelope, endoplasmic reticulum membrane, cytosol, plasma membrane, membrane, chromaffin granule membrane, extracellular exosome,

Expression : Isoform 1 is expressed in brain, heart and skeletal muscle. Isoform 2 is more abundant in liver, lung, kidney, spleen, fibroblasts and placenta.

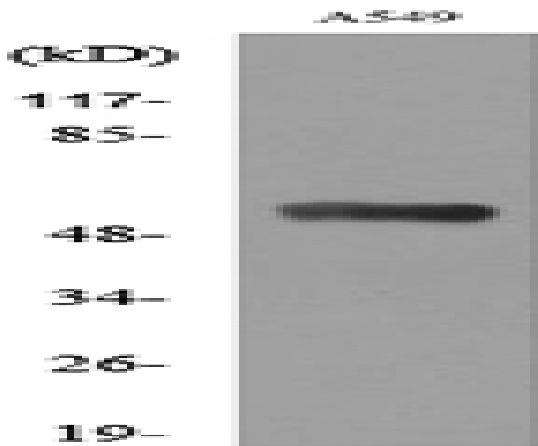
Products Images



Western Blot analysis of A549 cells using Annexin VII Polyclonal Antibody. Secondary antibody (catalog#:RS0002) was diluted at 1:20000



Immunohistochemical analysis of paraffin-embedded human-pancreas, antibody was diluted at 1:100



Western blot analysis of lysate from A549 cells, using ANXA7 Antibody.