

Blr1 Polyclonal Antibody

Catalog No :	YT5613
Reactivity :	Human;Rat;Mouse;
Applications :	WB;ELISA
Target :	Blr1
Fields :	>>Cytokine-cytokine receptor interaction;>>Viral protein interaction with cytokine and cytokine receptor;>>Chemokine signaling pathway
Gene Name :	CXCR5
Protein Name :	C-X-C chemokine receptor type 5
Human Gene Id :	643
Human Swiss Prot No :	P32302
Mouse Swiss Prot No :	Q04683
Immunogen :	The antiserum was produced against synthesized peptide derived from the N-terminal region of human CXCR5. AA range:1-50
Specificity :	Blr1 Polyclonal Antibody detects endogenous levels of Blr1 protein.
Formulation :	Liquid in PBS containing 50% glycerol, 0.5% BSA and 0.02% sodium azide.
Source :	Polyclonal, Rabbit,IgG
Dilution :	WB 1:500 - 1:2000. ELISA: 1:10000. Not yet tested in other applications.
Purification :	The antibody was affinity-purified from rabbit antiserum by affinity-chromatography using epitope-specific immunogen.
Concentration :	1 mg/ml
Storage Stability :	-15°C to -25°C/1 year(Do not lower than -25°C)

Observed Band : 42kD

Cell Pathway : Cytokine-cytokine receptor interaction;Chemokine;

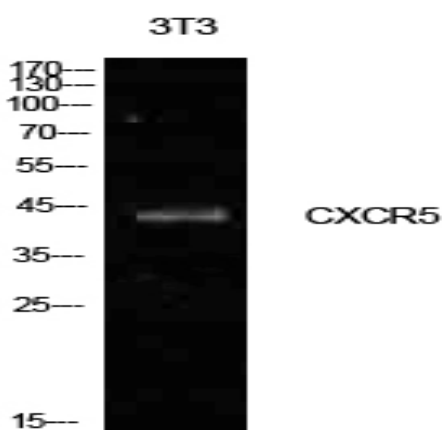
Background : C-X-C motif chemokine receptor 5(CXCR5) Homo sapiens This gene encodes a multi-pass membrane protein that belongs to the CXC chemokine receptor family. It is expressed in mature B-cells and Burkitt's lymphoma. This cytokine receptor binds to B-lymphocyte chemoattractant (BLC), and is involved in B-cell migration into B-cell follicles of spleen and Peyer patches. Alternatively spliced transcript variants encoding different isoforms have been described for this gene. [provided by RefSeq, Aug 2011],

Function : function:Cytokine receptor that binds to B-lymphocyte chemoattractant (BLC). Involved in B-cell migration into B-cell follicles of spleen and Peyer patches but not into those of mesenteric or peripheral lymph nodes. May have a regulatory function in Burkitt lymphoma (BL) lymphomagenesis and/or B-cell differentiation.,online information:CXC chemokine receptors entry,similarity:Belongs to the G-protein coupled receptor 1 family.,tissue specificity:Expression in mature B-cells and Burkitt lymphoma cells.,

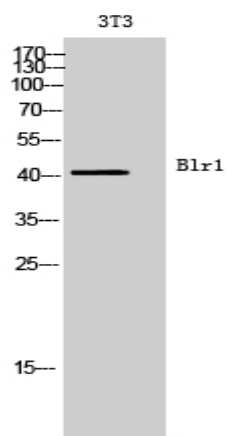
Subcellular Location : Cell membrane; Multi-pass membrane protein.

Expression : Expression in mature B-cells and Burkitt lymphoma cells.

Products Images



Western Blot analysis of NIH-3T3 cells using Blr1 Polyclonal Antibody. Secondary antibody(catalog#:RS0002) was diluted at 1:20000



Western Blot analysis of 3T3 cells using Blr1 Polyclonal Antibody.
Secondary antibody(catalog#:RS0002) was diluted at 1:20000