

GDF-3 Polyclonal Antibody

Catalog No :	YT5646
Reactivity :	Human;Rat;Mouse;
Applications :	WB;ELISA
Target :	GDF-3
Fields :	>>Cytokine-cytokine receptor interaction
Gene Name :	GDF3
Protein Name :	Growth/differentiation factor 3
Human Gene Id :	9573
Human Swiss Prot No :	Q9NR23
Mouse Gene Id :	14562
Mouse Swiss Prot No :	Q07104
Immunogen :	Synthesized peptide derived from Growth/differentiation factor 3 at AA range: 311-360
Specificity :	GDF-3 Polyclonal Antibody detects endogenous levels of GDF-3 protein.
Formulation :	Liquid in PBS containing 50% glycerol, 0.5% BSA and 0.02% sodium azide.
Source :	Polyclonal, Rabbit,IgG
Dilution :	WB 1:500 - 1:2000. ELISA: 1:10000. Not yet tested in other applications.
Purification :	The antibody was affinity-purified from rabbit antiserum by affinity-chromatography using epitope-specific immunogen.
Concentration :	1 mg/ml

Storage Stability : -15°C to -25°C/1 year(Do not lower than -25°C)

Observed Band : 41kD

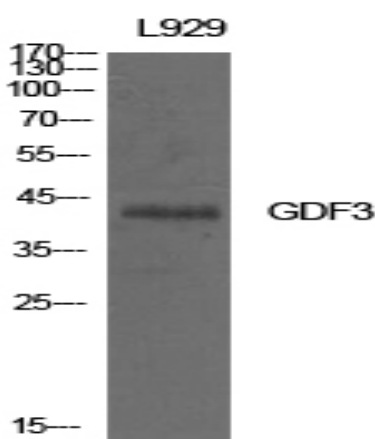
Background : This gene encodes a secreted ligand of the TGF-beta (transforming growth factor-beta) superfamily of proteins. Ligands of this family bind various TGF-beta receptors leading to recruitment and activation of SMAD family transcription factors that regulate gene expression. The encoded preprotein is proteolytically processed to generate each subunit of the disulfide-linked homodimer. This protein plays a role ocular and skeletal development. Mutations in this gene are associated with microphthalmia, coloboma, and skeletal abnormalities in human patients. [provided by RefSeq, Aug 2016],

Function : online information:GDF3 entry,similarity:Belongs to the TGF-beta family.,subunit:Homodimer or heterodimer (Potential). But, in contrast to other members of this family, cannot be disulfide-linked.,

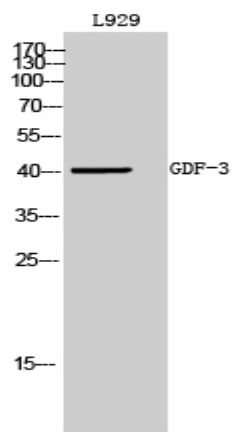
Subcellular Location : Secreted . Cytoplasm . Mainly accumulated in the cytoplasm. .

Expression : Kidney,

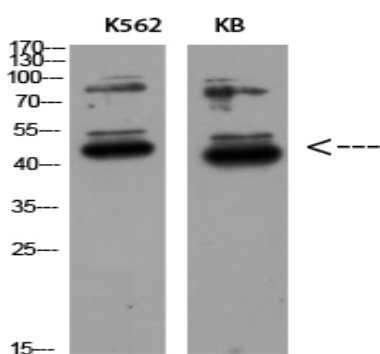
Products Images



Western Blot analysis of L929 cells using GDF-3 Polyclonal Antibody. Antibody was diluted at 1:500. Secondary antibody(catalog#:RS0002) was diluted at 1:20000



Western Blot analysis of L929 cells using GDF-3 Polyclonal Antibody diluted at 1:500. Secondary antibody(catalog#:RS0002) was diluted at 1:20000



Western Blot analysis of K562 KB using GDF-3 Polyclonal Antibody diluted at 1:500. Secondary antibody(catalog#:RS0002) was diluted at 1:20000