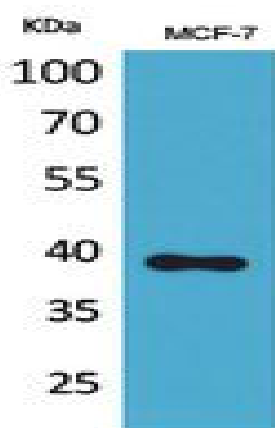


Nov Polyclonal Antibody

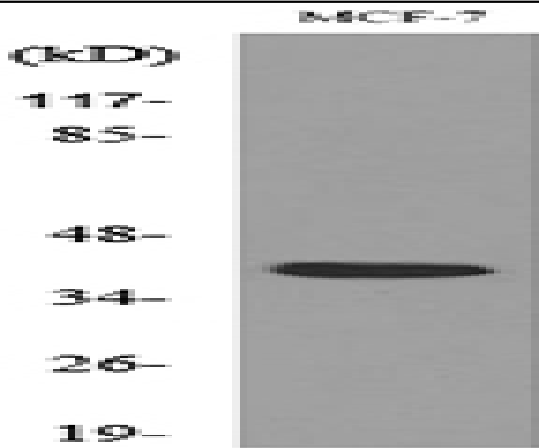
Catalog No :	YT5412
Reactivity :	Human;Mouse
Applications :	WB;IHC;IF;ELISA
Target :	Nov
Gene Name :	NOV
Protein Name :	Protein NOV homolog
Human Gene Id :	4856
Human Swiss Prot No :	P48745
Mouse Gene Id :	18133
Mouse Swiss Prot No :	Q64299
Rat Gene Id :	81526
Rat Swiss Prot No :	Q9QZQ5
Immunogen :	The antiserum was produced against synthesized peptide derived from the Internal region of human NOV. AA range:221-270
Specificity :	Nov Polyclonal Antibody detects endogenous levels of Nov protein.
Formulation :	Liquid in PBS containing 50% glycerol, 0.5% BSA and 0.02% sodium azide.
Source :	Polyclonal, Rabbit,IgG
Dilution :	WB 1:500 - 1:2000. IHC: 1:100-1:300. ELISA: 1:20000.. IF 1:50-200
Purification :	The antibody was affinity-purified from rabbit antiserum by affinity-chromatography using epitope-specific immunogen.

Concentration :	1 mg/ml
Storage Stability :	-15°C to -25°C/1 year(Do not lower than -25°C)
Observed Band :	39kD
Background :	The protein encoded by this gene is a small secreted cysteine-rich protein and a member of the CCN family of regulatory proteins. CNN family proteins associate with the extracellular matrix and play an important role in cardiovascular and skeletal development, fibrosis and cancer development. [provided by RefSeq, Feb 2009],
Function :	function:Immediate-early protein likely to play a role in cell growth regulation.,similarity:Belongs to the CCN family.,similarity:Contains 1 CTCK (C-terminal cystine knot-like) domain.,similarity:Contains 1 IGFBP N-terminal domain.,similarity:Contains 1 TSP type-1 domain.,similarity:Contains 1 VWFC domain.,subunit:Interacts with FBLN1.,tissue specificity:Increased expression in Wilms tumor of the stromal type.,
Subcellular Location :	Secreted. Cytoplasm . Cell junction, gap junction . Localizes at the gap junction in presence of GJA1. .
Expression :	Expressed in endiothelial cells (at protein level) (PubMed:21063504). Expressed in bone marrow, thymic cells and nephroblastoma. Increased expression in Wilms tumor of the stromal type.

Products Images



Western Blot analysis of MCF-7 cells using Nov Polyclonal Antibody. Secondary antibody(catalog#:RS0002) was diluted at 1:20000



Western blot analysis of lysate from MCF-7 cells, using NOV Antibody.