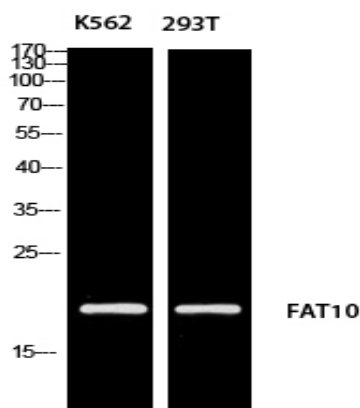


FAT10 Polyclonal Antibody

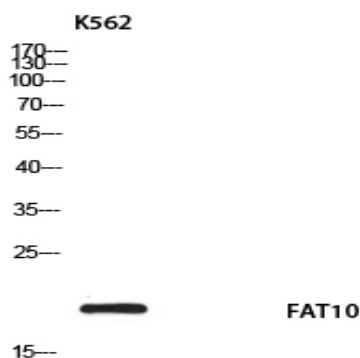
Catalog No :	YT5678
Reactivity :	Human;Rat;Mouse;
Applications :	WB;ELISA
Target :	FAT10
Gene Name :	UBD
Protein Name :	Ubiquitin D
Human Gene Id :	10537
Human Swiss Prot No :	O15205
Mouse Swiss Prot No :	P63072
Immunogen :	Synthesized peptide derived from the Internal region of human FAT10.
Specificity :	FAT10 Polyclonal Antibody detects endogenous levels of FAT10 protein.
Formulation :	Liquid in PBS containing 50% glycerol, 0.5% BSA and 0.02% sodium azide.
Source :	Polyclonal, Rabbit,IgG
Dilution :	WB 1:500 - 1:2000. ELISA: 1:10000. Not yet tested in other applications.
Purification :	The antibody was affinity-purified from rabbit antiserum by affinity-chromatography using epitope-specific immunogen.
Concentration :	1 mg/ml
Storage Stability :	-15°C to -25°C/1 year(Do not lower than -25°C)
Observed Band :	18kD

Background :	<u>similarity:Contains 2 ubiquitin-like domains.,subunit:Interacts with MAD2.,</u>
Function :	<u>similarity:Contains 2 ubiquitin-like domains.,subunit:Interacts with MAD2.,</u>
Subcellular Location :	<u>Nucleus . Cytoplasm . Accumulates in aggresomes under proteasome inhibition conditions.</u>
Expression :	<u>Constitutively expressed in mature dendritic cells and B-cells. Mostly expressed in the reticuloendothelial system (e.g. thymus, spleen), the gastrointestinal system, kidney, lung and prostate gland.</u>

Products Images



Western blot analysis of K562 293T using FAT10 antibody. Antibody was diluted at 1:1000. Secondary antibody(catalog#:RS0002) was diluted at 1:20000



Western blot analysis of K562 using FAT10 antibody. Antibody was diluted at 1:1000. Secondary antibody(catalog#:RS0002) was diluted at 1:20000