

CD225 Polyclonal Antibody

Catalog No :	YT5478
Reactivity :	Human;Mouse
Applications :	WB;IHC;IF;ELISA
Target :	CD225
Fields :	>>B cell receptor signaling pathway
Gene Name :	IFITM1
Protein Name :	Interferon-induced transmembrane protein 1
Human Gene Id :	8519
Human Swiss Prot No :	P13164
Mouse Gene Id :	68713
Mouse Swiss Prot No :	Q9D103
Immunogen :	The antiserum was produced against synthesized peptide derived from the N-terminal region of human IFITM1. AA range:1-50
Specificity :	CD225 Polyclonal Antibody detects endogenous levels of CD225 protein.
Formulation :	Liquid in PBS containing 50% glycerol, 0.5% BSA and 0.02% sodium azide.
Source :	Polyclonal, Rabbit,IgG
Dilution :	WB 1:500 - 1:2000. IHC: 1:100-1:300. ELISA: 1:20000.. IF 1:50-200
Purification :	The antibody was affinity-purified from rabbit antiserum by affinity-chromatography using epitope-specific immunogen.
Concentration :	1 mg/ml

Storage Stability : -15°C to -25°C/1 year(Do not lower than -25°C)

Observed Band : 15kD

Cell Pathway : B_Cell_Antigen;

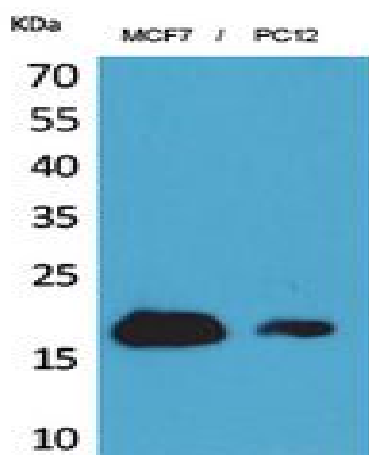
Background : function:Implicated in the control of cell growth. Component of a multimeric complex involved in the transduction of antiproliferative and homotypic adhesion signals.,induction:By alpha and gamma interferons.,similarity:Belongs to the CD225 family.,

Function : function:Implicated in the control of cell growth. Component of a multimeric complex involved in the transduction of antiproliferative and homotypic adhesion signals.,induction:By alpha and gamma interferons.,similarity:Belongs to the CD225 family.,

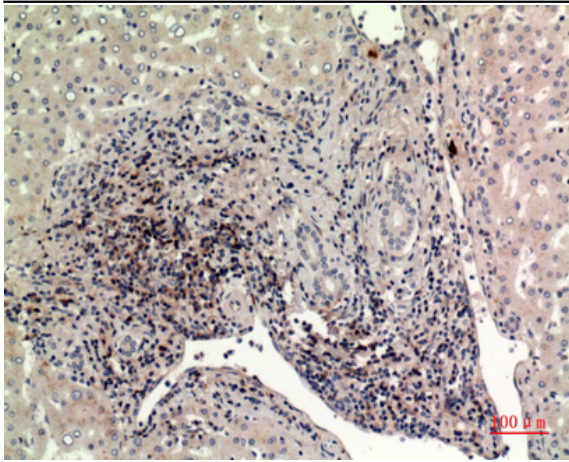
Subcellular Location : Cell membrane ; Single-pass membrane protein . Lysosome membrane .

Expression : Bone (at protein level). Levels greatly elevated in colon cancer, cervical cancer, esophageal cancer and ovarian cancer. Expressed in glioma cell lines.

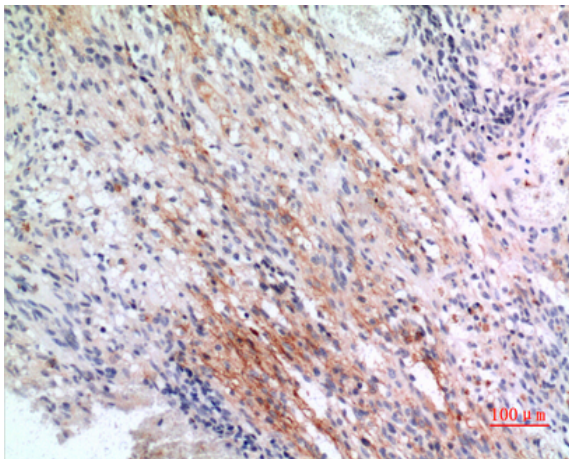
Products Images



Western Blot analysis of MCF7, PC12 cells using CD225 Polyclonal Antibody. Secondary antibody(catalog#:RS0002) was diluted at 1:20000



Immunohistochemical analysis of paraffin-embedded human-liver, antibody was diluted at 1:100



Immunohistochemical analysis of paraffin-embedded human-brain, antibody was diluted at 1:100