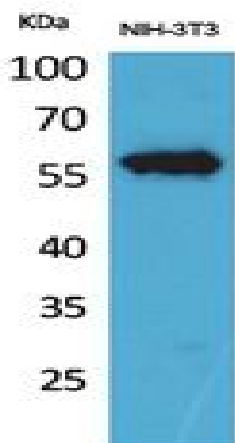


CD223 Polyclonal Antibody

Catalog No :	YT5480
Reactivity :	Human;Rat;Mouse;
Applications :	WB;ELISA
Target :	CD223
Gene Name :	LAG3
Protein Name :	Lymphocyte activation gene 3 protein
Human Gene Id :	3902
Human Swiss Prot No :	P18627
Mouse Gene Id :	16768
Mouse Swiss Prot No :	Q61790
Rat Gene Id :	297596
Rat Swiss Prot No :	Q5BK54
Immunogen :	The antiserum was produced against synthesized peptide derived from the Internal region of human LAG3. AA range:91-140
Specificity :	CD223 Polyclonal Antibody detects endogenous levels of CD223 protein.
Formulation :	Liquid in PBS containing 50% glycerol, 0.5% BSA and 0.02% sodium azide.
Source :	Polyclonal, Rabbit,IgG
Dilution :	WB 1:500 - 1:2000. ELISA: 1:20000. Not yet tested in other applications.
Purification :	The antibody was affinity-purified from rabbit antiserum by affinity-chromatography using epitope-specific immunogen.

Concentration :	1 mg/ml
Storage Stability :	-15°C to -25°C/1 year(Do not lower than -25°C)
Observed Band :	57kD
Background :	Lymphocyte-activation protein 3 belongs to Ig superfamily and contains 4 extracellular Ig-like domains. The LAG3 gene contains 8 exons. The sequence data, exon/intron organization, and chromosomal localization all indicate a close relationship of LAG3 to CD4. [provided by RefSeq, Jul 2008],
Function :	function:Involved in lymphocyte activation. Binds to HLA class-II antigens.,similarity:Contains 1 Ig-like V-type (immunoglobulin-like) domain.,similarity:Contains 3 Ig-like C2-type (immunoglobulin-like) domains.,tissue specificity:On cell surface of activated NK and T-lymphocytes.,
Subcellular Location :	[Lymphocyte activation gene 3 protein]: Cell membrane ; Single-pass type I membrane protein .; [Secreted lymphocyte activation gene 3 protein]: Secreted . Produced following cleavage of the main chain. .
Expression :	Primarily expressed in activated T-cells and a subset of natural killer (NK) cells.

Products Images



Western Blot analysis of NIH-3T3 cells using CD223 Polyclonal Antibody. Secondary antibody(catalog#:RS0002) was diluted at 1:20000