

## CD88 Polyclonal Antibody

|                              |  |
|------------------------------|--|
| <b>Catalog No :</b>          | YT5710   |
| <b>Reactivity :</b>          | Human;Rat;Mouse;   |
| <b>Applications :</b>        | WB;ELISA   |
| <b>Target :</b>              | CD88   |
| <b>Fields :</b>              | >>Neuroactive ligand-receptor interaction;>>Complement and coagulation cascades;>>Neutrophil extracellular trap formation;>>Alcoholic liver disease;>>Staphylococcus aureus infection;>>Coronavirus disease - COVID-19 |
| <b>Gene Name :</b>           | C5AR1  |
| <b>Protein Name :</b>        | C5a anaphylatoxin chemotactic receptor   |
| <b>Human Gene Id :</b>       | 58503  |
| <b>Human Swiss Prot No :</b> | P21730   |
| <b>Mouse Swiss Prot No :</b> | P30993   |
| <b>Immunogen :</b>           | The antiserum was produced against synthesized peptide derived from the N-terminal region of human C5AR1. AA range:1-50  |
| <b>Specificity :</b>         | CD88 Polyclonal Antibody detects endogenous levels of CD88 protein.  |
| <b>Formulation :</b>         | Liquid in PBS containing 50% glycerol, 0.5% BSA and 0.02% sodium azide.  |
| <b>Source :</b>              | Polyclonal, Rabbit,IgG   |
| <b>Dilution :</b>            | WB 1:500 - 1:2000. ELISA: 1:10000. Not yet tested in other applications.   |
| <b>Purification :</b>        | The antibody was affinity-purified from rabbit antiserum by affinity-chromatography using epitope-specific immunogen.  |
| <b>Concentration :</b>       | 1 mg/ml  |

**Storage Stability :** -15°C to -25°C/1 year(Do not lower than -25°C)

**Observed Band :** 39kD

**Cell Pathway :** Neuroactive ligand-receptor interaction;Complement and coagulation cascades;

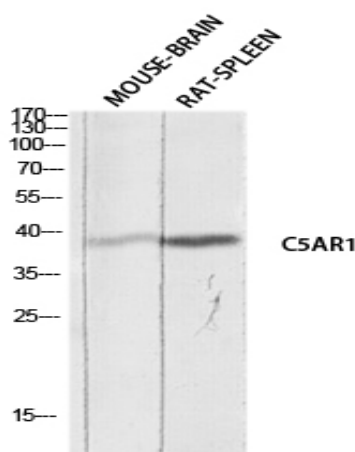
**Background :** function:Receptor for the chemotactic and inflammatory peptide anaphylatoxin C5a. This receptor stimulates chemotaxis, granule enzyme release and superoxide anion production.,PTM:Sulfation plays a critical role in the association of the receptor with C5a, but no significant role in the ability of the receptor to transduce a signal and mobilize calcium in response to a small peptide agonist.,similarity:Belongs to the G-protein coupled receptor 1 family.,

**Function :** function:Receptor for the chemotactic and inflammatory peptide anaphylatoxin C5a. This receptor stimulates chemotaxis, granule enzyme release and superoxide anion production.,PTM:Sulfation plays a critical role in the association of the receptor with C5a, but no significant role in the ability of the receptor to transduce a signal and mobilize calcium in response to a small peptide agonist.,similarity:Belongs to the G-protein coupled receptor 1 family.,

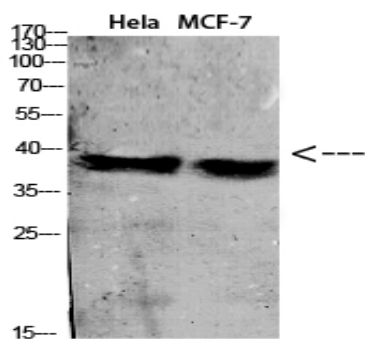
**Subcellular Location :** Cell membrane ; Multi-pass membrane protein . Cytoplasmic vesicle . Phosphorylated C5aR colocalizes with ARRB1 and ARRB2 in cytoplasmic vesicles. .

**Expression :** Brain,

## Products Images



Western blot analysis of MOUSE-BRAIN RAT-SPLEEN lysis using C5AR1 antibody. Antibody was diluted at 1:1000. Secondary antibody(catalog#:RS0002) was diluted at 1:20000



Western Blot analysis of various cells using Antibody diluted at 1:1000. Secondary antibody(catalog#:RS0002) was diluted at 1:20000