

## CTACK Polyclonal Antibody

<b>Catalog No :</b>	YT5724
<b>Reactivity :</b>	Human;Rat;Mouse;
<b>Applications :</b>	WB;IHC;IF;ELISA
<b>Target :</b>	CTACK
<b>Fields :</b>	>>Cytokine-cytokine receptor interaction;>>Viral protein interaction with cytokine and cytokine receptor;>>Chemokine signaling pathway
<b>Gene Name :</b>	CCL27
<b>Protein Name :</b>	C-C motif chemokine 27
<b>Human Gene Id :</b>	10850
<b>Human Swiss Prot No :</b>	Q9Y4X3
<b>Mouse Gene Id :</b>	100039863
<b>Mouse Swiss Prot No :</b>	Q9Z1X0
<b>Immunogen :</b>	Synthesized peptide derived from C-C motif chemokine 27 at AA range: 51-100
<b>Specificity :</b>	CTACK Polyclonal Antibody detects endogenous levels of CTACK protein.
<b>Formulation :</b>	Liquid in PBS containing 50% glycerol, 0.5% BSA and 0.02% sodium azide.
<b>Source :</b>	Polyclonal, Rabbit,IgG
<b>Dilution :</b>	WB 1:500 - 1:2000. IHC: 1:100-1:300. ELISA: 1:10000.. IF 1:50-200
<b>Purification :</b>	The antibody was affinity-purified from rabbit antiserum by affinity-chromatography using epitope-specific immunogen.
<b>Concentration :</b>	1 mg/ml

**Storage Stability :** -15°C to -25°C/1 year(Do not lower than -25°C)

**Observed Band :** 12kD

**Cell Pathway :** Cytokine-cytokine receptor interaction;Chemokine;Intestinal immune network for IgA production;

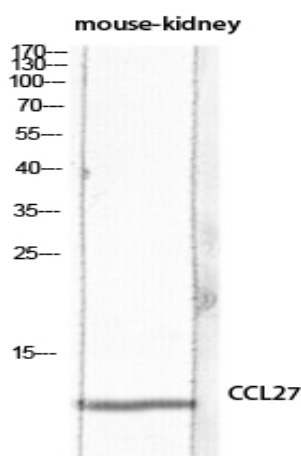
**Background :** This gene is one of several CC cytokine genes clustered on the p-arm of chromosome 9. Cytokines are a family of secreted proteins involved in immunoregulatory and inflammatory processes. The CC cytokines are proteins characterized by two adjacent cysteines. The protein encoded by this gene is chemotactic for skin-associated memory T lymphocytes. This cytokine may also play a role in mediating homing of lymphocytes to cutaneous sites. It specifically binds to chemokine receptor 10 (CCR10). Studies of a similar murine protein indicate that these protein-receptor interactions have a pivotal role in T cell-mediated skin inflammation. [provided by RefSeq, Sep 2014],

**Function :** function:Chemotactic factor that attracts skin-associated memory T-lymphocytes. May play a role in mediating homing of lymphocytes to cutaneous sites. Binds to CCR10.,online information:CCL27 entry,similarity:Belongs to the intercrine beta (chemokine CC) family.,tissue specificity:Testis, thymus, placenta, ovary and skin.,

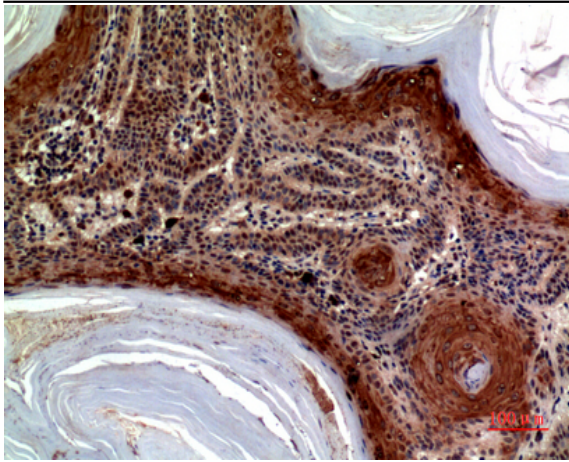
**Subcellular Location :** Secreted .

**Expression :** Testis, thymus, placenta, ovary and skin.

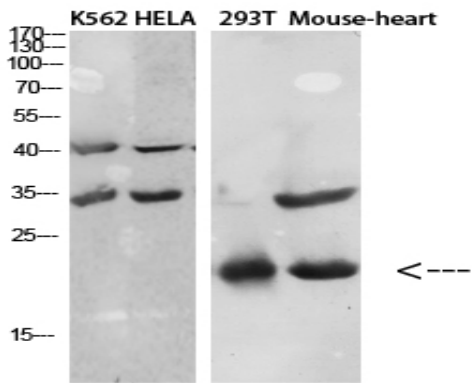
## Products Images



Western blot analysis of mouse-kidney lysis using CCL27 antibody. Antibody was diluted at 1:1000. Secondary antibody(catalog#:RS0002) was diluted at 1:20000



Immunohistochemical analysis of paraffin-embedded human-skin, antibody was diluted at 1:100



Western Blot analysis of various cells using Antibody diluted at 1:1000. Secondary antibody(catalog#:RS0002) was diluted at 1:20000