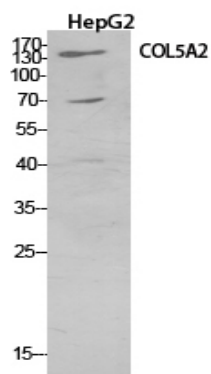


COL5A2 Polyclonal Antibody

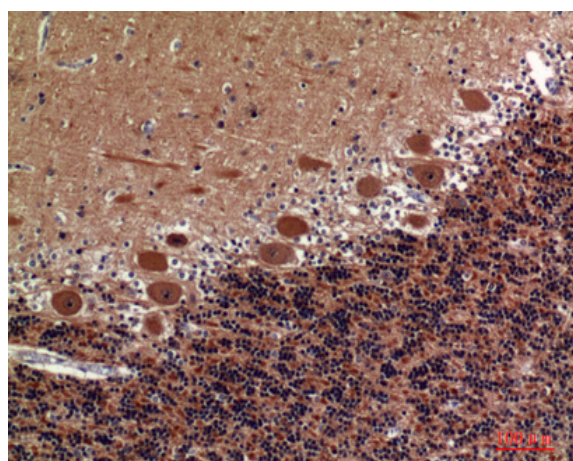
Catalog No :	YT5533
Reactivity :	Human;Mouse
Applications :	WB;IHC;IF;ELISA
Target :	Collagen V α 2
Fields :	>>Protein digestion and absorption
Gene Name :	COL5A2
Protein Name :	Collagen alpha-2(V) chain
Human Gene Id :	1290
Human Swiss Prot No :	P05997
Mouse Gene Id :	12832
Mouse Swiss Prot No :	Q3U962
Immunogen :	The antiserum was produced against synthesized peptide derived from the N-terminal region of human COL5A2. AA range:1-50
Specificity :	COL5A2 Polyclonal Antibody detects endogenous levels of COL5A2 protein.
Formulation :	Liquid in PBS containing 50% glycerol, 0.5% BSA and 0.02% sodium azide.
Source :	Polyclonal, Rabbit,IgG
Dilution :	WB 1:500 - 1:2000. IHC: 1:100-1:300. ELISA: 1:20000.. IF 1:50-200
Purification :	The antibody was affinity-purified from rabbit antiserum by affinity-chromatography using epitope-specific immunogen.
Concentration :	1 mg/ml

Storage Stability :	-15 °C to -25 °C/1 year(Do not lower than -25 °C)
Observed Band :	145kD
Cell Pathway :	Focal adhesion;ECM-receptor interaction;
Background :	<p>This gene encodes an alpha chain for one of the low abundance fibrillar collagens. Fibrillar collagen molecules are trimers that can be composed of one or more types of alpha chains. Type V collagen is found in tissues containing type I collagen and appears to regulate the assembly of heterotypic fibers composed of both type I and type V collagen. This gene product is closely related to type XI collagen and it is possible that the collagen chains of types V and XI constitute a single collagen type with tissue-specific chain combinations. Mutations in this gene are associated with Ehlers-Danlos syndrome, types I and II. [provided by RefSeq, Jul 2008],</p>
Function :	<p>disease:Defects in COL5A2 are a cause of Ehlers-Danlos syndrome type 1 (EDS1) [MIM:130000]; also known as Ehlers-Danlos syndrome gravis or severe classic type Ehlers-Danlos syndrome. EDS is a connective tissue disorder characterized by hyperextensible skin, atrophic cutaneous scars due to tissue fragility and joint hyperlaxity. EDS1 is the severe form of classic Ehlers-Danlos syndrome.,disease:Defects in COL5A2 are a cause of Ehlers-Danlos syndrome type 2 (EDS2) [MIM:130010]; also known as Ehlers-Danlos syndrome mitis or mild classic type Ehlers Danlos syndrome.,disease:Genetic variation in COL5A2 is associated with spontaneous cervical artery dissections (sCAD). sCAD are an important cause of stroke among young and middle-aged patients. Ultrastructural abnormalities are observed in skin biopsies of most patients with sCAD. Major findings included enlarged and irregular collagen fibrils</p>
Subcellular Location :	Secreted, extracellular space, extracellular matrix .
Expression :	Bone,Brain,Chondrosarcoma,Placenta,Skin,

Products Images



Western Blot analysis of HepG2 cells using COL5A2 Polyclonal Antibody. Secondary antibody(catalog#:RS0002) was diluted at 1:20000



Immunohistochemical analysis of paraffin-embedded human-brain, antibody was diluted at 1:100