

## CD39 Polyclonal Antibody

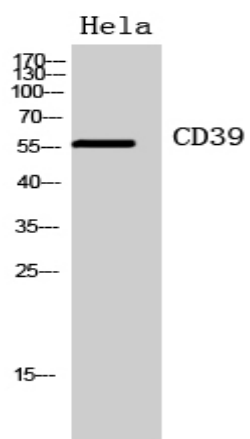
<b>Catalog No :</b>	YT5586
<b>Reactivity :</b>	Human;Mouse;Rat
<b>Applications :</b>	WB;ELISA
<b>Target :</b>	CD39
<b>Fields :</b>	>>Purine metabolism;>>Pyrimidine metabolism;>>Metabolic pathways;>>Nucleotide metabolism;>>Epstein-Barr virus infection
<b>Gene Name :</b>	ENTPD1
<b>Protein Name :</b>	Ectonucleoside triphosphate diphosphohydrolase 1
<b>Human Gene Id :</b>	953
<b>Human Swiss Prot No :</b>	P49961
<b>Mouse Gene Id :</b>	12495
<b>Mouse Swiss Prot No :</b>	P55772
<b>Rat Gene Id :</b>	64519
<b>Rat Swiss Prot No :</b>	P97687
<b>Immunogen :</b>	The antiserum was produced against synthesized peptide derived from the Internal region of human ENTPD1. AA range:31-80
<b>Specificity :</b>	CD39 Polyclonal Antibody detects endogenous levels of CD39 protein.
<b>Formulation :</b>	Liquid in PBS containing 50% glycerol, 0.5% BSA and 0.02% sodium azide.
<b>Source :</b>	Polyclonal, Rabbit,IgG
<b>Dilution :</b>	WB 1:500 - 1:2000. ELISA: 1:10000. Not yet tested in other applications.

---

<b>Purification :</b>	The antibody was affinity-purified from rabbit antiserum by affinity-chromatography using epitope-specific immunogen.
<b>Concentration :</b>	1 mg/ml
<b>Storage Stability :</b>	-15°C to -25°C/1 year(Do not lower than -25°C)
<b>Observed Band :</b>	56kD
<b>Cell Pathway :</b>	Purine metabolism;Pyrimidine metabolism;
<b>Background :</b>	The protein encoded by this gene is a plasma membrane protein that hydrolyzes extracellular ATP and ADP to AMP. Inhibition of this protein's activity may confer anticancer benefits. Several transcript variants encoding different isoforms have been found for this gene. [provided by RefSeq, Aug 2015],
<b>Function :</b>	catalytic activity:ATP + 2 H(2)O = AMP + 2 phosphate.,cofactor:Calcium.,cofactor:Magnesium.,function:In the nervous system, could hydrolyze ATP and other nucleotides to regulate purinergic neurotransmission. Could also be implicated in the prevention of platelet aggregation. Hydrolyzes ATP and ADP equally well.,PTM:Palmitoylated in the N-terminal part.,PTM:The N-terminus is blocked.,similarity:Belongs to the GDA1/CD39 NTPase family.,subunit:Homodimer; disulfide-linked.,tissue specificity:Expressed primarily on activated lymphoid cells. Also expressed in endothelial tissues. The vascular isoform and the placental isoform II are present in both placenta and umbilical vein, whereas placental isoform I is present in placenta only.,
<b>Subcellular Location :</b>	Membrane ; Multi-pass membrane protein .
<b>Expression :</b>	Expressed primarily on activated lymphoid cells. Also expressed in endothelial tissues. Isoform 1 and isoform 3 are present in both placenta and umbilical vein, whereas isoform 2 is present in placenta only.

---

## Products Images



Western Blot analysis of HeLa cells using CD39 Polyclonal Antibody. Secondary antibody(catalog#:RS0002) was diluted at 1:20000