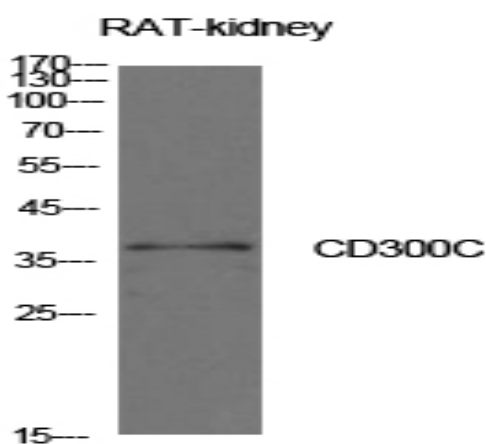


CD300c Polyclonal Antibody

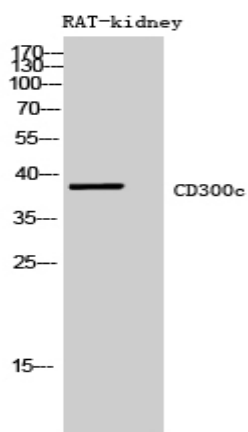
Catalog No :	YT5619
Reactivity :	Human;Mouse
Applications :	WB;ELISA
Target :	CD300c
Gene Name :	CD300C
Protein Name :	CMRF35-like molecule 6
Human Gene Id :	10871
Human Swiss Prot No :	Q08708
Mouse Gene Id :	387565
Mouse Swiss Prot No :	A2A7V7
Immunogen :	The antiserum was produced against synthesized peptide derived from the Internal region of human CD300C. AA range:131-180
Specificity :	CD300c Polyclonal Antibody detects endogenous levels of CD300c protein.
Formulation :	Liquid in PBS containing 50% glycerol, 0.5% BSA and 0.02% sodium azide.
Source :	Polyclonal, Rabbit,IgG
Dilution :	WB 1:500 - 1:2000. ELISA: 1:10000. Not yet tested in other applications.
Purification :	The antibody was affinity-purified from rabbit antiserum by affinity-chromatography using epitope-specific immunogen.
Concentration :	1 mg/ml
Storage Stability :	-15°C to -25°C/1 year(Do not lower than -25°C)

Observed Band : 37kD**Background :** CD300c molecule(CD300C) Homo sapiens The CMRF35 antigen, which was identified by reactivity with a monoclonal antibody, is present on monocytes, neutrophils, and some T and B lymphocytes (Jackson et al., 1992 [PubMed 1349532]).[supplied by OMIM, Mar 2008],**Function :** similarity:Belongs to the CD300 family.,similarity:Contains 1 Ig-like V-type (immunoglobulin-like) domain.,tissue specificity:Present on the surface of monocytes, neutrophils, a proportion of peripheral blood T- and B-lymphocytes and lymphocytic cell lines.,**Subcellular Location :** Cell membrane ; Single-pass type I membrane protein .**Expression :** Present on the surface of monocytes, neutrophils, a proportion of peripheral blood T- and B-lymphocytes and lymphocytic cell lines.

Products Images



Western Blot analysis of rat kidney cells using CD300c Polyclonal Antibody. Antibody was diluted at 1:500. Secondary antibody(catalog#:RS0002) was diluted at 1:20000



Western Blot analysis of RAT-kidney cells using CD300c Polyclonal Antibody diluted at 1:500. Secondary antibody(catalog#:RS0002) was diluted at 1:20000