

## CD300d Polyclonal Antibody

|                              |   |
|------------------------------|---|
| <b>Catalog No :</b>          | YT5636  |
| <b>Reactivity :</b>          | Human;Mouse   |
| <b>Applications :</b>        | WB;ELISA  |
| <b>Target :</b>              | CD300d  |
| <b>Gene Name :</b>           | CD300LD   |
| <b>Protein Name :</b>        | CMRF35-like molecule 4  |
| <b>Human Gene Id :</b>       | 100131439   |
| <b>Human Swiss Prot No :</b> | Q6UXZ3  |
| <b>Mouse Gene Id :</b>       | 217305  |
| <b>Immunogen :</b>           | The antiserum was produced against synthesized peptide derived from the Internal region of human CD300LD. AA range:61-110 |
| <b>Specificity :</b>         | CD300d Polyclonal Antibody detects endogenous levels of CD300d protein.   |
| <b>Formulation :</b>         | Liquid in PBS containing 50% glycerol, 0.5% BSA and 0.02% sodium azide.   |
| <b>Source :</b>              | Polyclonal, Rabbit,IgG  |
| <b>Dilution :</b>            | WB 1:500 - 1:2000. ELISA: 1:10000. Not yet tested in other applications.  |
| <b>Purification :</b>        | The antibody was affinity-purified from rabbit antiserum by affinity-chromatography using epitope-specific immunogen.     |
| <b>Concentration :</b>       | 1 mg/ml   |
| <b>Storage Stability :</b>   | -15°C to -25°C/1 year(Do not lower than -25°C)  |
| <b>Observed Band :</b>       | 22kD  |

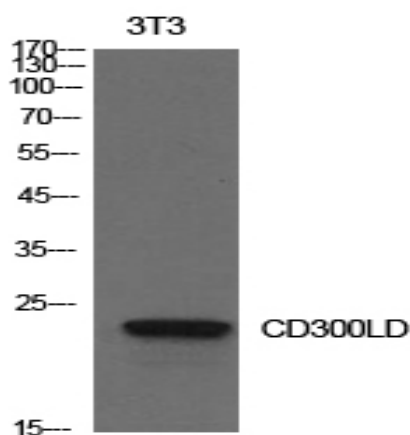
**Background :** similarity:Belongs to the CD300 family.,similarity:Contains 1 Ig-like V-type (immunoglobulin-like) domain.,

**Function :** similarity:Belongs to the CD300 family.,similarity:Contains 1 Ig-like V-type (immunoglobulin-like) domain.,

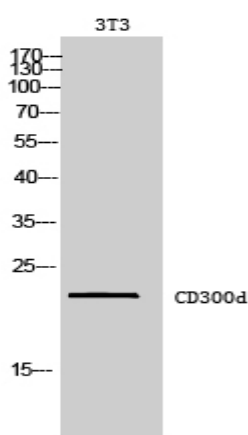
**Subcellular Location :** Cell membrane ; Single-pass type I membrane protein . Cell surface localization requires the ITAM-bearing Fc receptor FCER1G to overcome ER retention.

**Expression :** Expression seems restricted to cells of myeloid lineage.

## Products Images



Western Blot analysis of NIH-3T3 cells using CD300d Polyclonal Antibody. Secondary antibody(catalog#:RS0002) was diluted at 1:20000



Western Blot analysis of 3T3 cells using CD300d Polyclonal Antibody. Secondary antibody(catalog#:RS0002) was diluted at 1:20000