

GDF-7 Polyclonal Antibody

Catalog No :	YT5654
Reactivity :	Human;Mouse;Rat
Applications :	WB;IHC;IF;ELISA
Target :	GDF-7
Fields :	>>Cytokine-cytokine receptor interaction;>>TGF-beta signaling pathway;>>Axon guidance;>>Hippo signaling pathway
Gene Name :	GDF7
Protein Name :	Growth/differentiation factor 7
Human Gene Id :	151449
Human Swiss Prot No :	Q7Z4P5
Mouse Gene Id :	238057
Mouse Swiss Prot No :	P43029
Immunogen :	The antiserum was produced against synthesized peptide derived from the Internal region of human GDF7. AA range:321-370
Specificity :	GDF-7 Polyclonal Antibody detects endogenous levels of GDF-7 protein.
Formulation :	Liquid in PBS containing 50% glycerol, 0.5% BSA and 0.02% sodium azide.
Source :	Polyclonal, Rabbit,IgG
Dilution :	WB 1:500 - 1:2000. IHC: 1:100-1:300. ELISA: 1:10000.. IF 1:50-200
Purification :	The antibody was affinity-purified from rabbit antiserum by affinity-chromatography using epitope-specific immunogen.
Concentration :	1 mg/ml

Storage Stability : -15°C to -25°C/1 year(Do not lower than -25°C)

Observed Band : 47kD

Cell Pathway : TGF-beta;

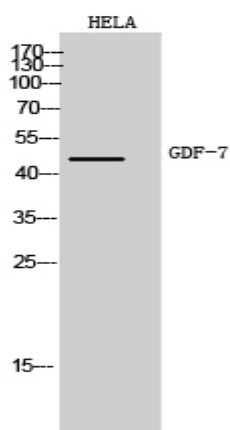
Background : This gene encodes a secreted ligand of the TGF-beta (transforming growth factor-beta) superfamily of proteins. Ligands of this family bind various TGF-beta receptors leading to recruitment and activation of SMAD family transcription factors that regulate gene expression. The encoded preproprotein is proteolytically processed to generate each subunit of the disulfide-linked homodimer. This protein may play a role in the differentiation of tendon cells and spinal cord interneurons. A mutation in this gene may be associated with increased risk for Barrett's esophagus and esophageal adenocarcinoma. [provided by RefSeq, Sep 2016],

Function : function:May play an active role in the motor area of the primate neocortex.,similarity:Belongs to the TGF-beta family.,subunit:Homodimer; disulfide-linked.,

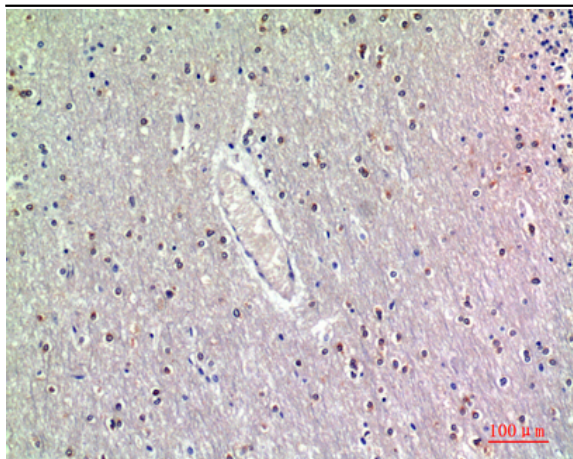
Subcellular Location : Secreted .

Expression : Testis,

Products Images



Western Blot analysis of HeLa cells using GDF-7 Polyclonal Antibody. Antibody was diluted at 1:1000. Secondary antibody(catalog#:RS0002) was diluted at 1:20000



Immunohistochemical analysis of paraffin-embedded human-brain, antibody was diluted at 1:200