

NHERF-2 Polyclonal Antibody

Catalog No :	YT5676
Reactivity :	Human;Mouse;Rat
Applications :	WB;ELISA
Target :	NHERF-2
Fields :	>>Aldosterone-regulated sodium reabsorption
Gene Name :	SLC9A3R2
Protein Name :	Na(+)/H(+) exchange regulatory cofactor NHE-RF2
Human Gene Id :	9351
Human Swiss Prot No :	Q15599
Mouse Gene Id :	65962
Mouse Swiss Prot No :	Q9JHL1
Rat Gene Id :	116501
Rat Swiss Prot No :	Q920G2
Immunogen :	Synthesized peptide derived from NHERF-2 . at AA range: 20-100
Specificity :	NHERF-2 Polyclonal Antibody detects endogenous levels of NHERF-2 protein.
Formulation :	Liquid in PBS containing 50% glycerol, 0.5% BSA and 0.02% sodium azide.
Source :	Polyclonal, Rabbit,IgG
Dilution :	WB 1:500 - 1:2000. ELISA: 1:10000. Not yet tested in other applications.
Purification :	The antibody was affinity-purified from rabbit antiserum by affinity-

chromatography using epitope-specific immunogen.

Concentration : 1 mg/ml

Storage Stability : -15°C to -25°C/1 year(Do not lower than -25°C)

Observed Band : 37kD

Cell Pathway : Aldosterone-regulated sodium reabsorption;

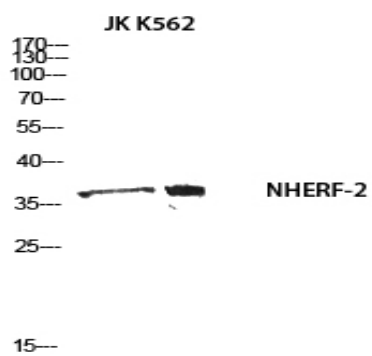
Background : This gene encodes a member of the NHERF family of PDZ scaffolding proteins. These proteins mediate many cellular processes by binding to and regulating the membrane expression and protein-protein interactions of membrane receptors and transport proteins. The encoded protein plays a role in intestinal sodium absorption by regulating the activity of the sodium/hydrogen exchanger 3, and may also regulate the cystic fibrosis transmembrane regulator (CFTR) ion channel. Alternatively spliced transcript variants encoding multiple isoforms have been observed for this gene. [provided by RefSeq, Nov 2011],

Function : function:Scaffold protein that connects plasma membrane proteins with members of the ezrin/moesin/radixin family and thereby helps to link them to the actin cytoskeleton and to regulate their surface expression. Necessary for cAMP-mediated phosphorylation and inhibition of SLC9A3. May also act as scaffold protein in the nucleus.,similarity:Contains 2 PDZ (DHR) domains.,subcellular location:Nuclear, in a punctate pattern.,subunit:Homodimer, and heterodimer with SLC9A3R1. Binds PODXL and PDZK1 (By similarity). Binds ADRB2, SLC9A3, P2RY1, P2YR2, SRY, RDX and LPAR2.,tissue specificity:Widely expressed.,

Subcellular Location : Endomembrane system ; Peripheral membrane protein . Nucleus . Apical cell membrane . Localizes with EZR and PODXL at the apical cell membrane of glomerular epithelium cells and the sides of the food processes (By similarity). Nuclear, in a punctate pattern. .

Expression : Widely expressed.

Products Images



Western blot analysis of JK K562 using NHERF-2 antibody.
Secondary antibody(catalog#:RS0002) was diluted at 1:20000