

## Endoglycan Polyclonal Antibody

<b>Catalog No :</b>	YT5684
<b>Reactivity :</b>	Human;Mouse
<b>Applications :</b>	WB;ELISA
<b>Target :</b>	Endoglycan
<b>Gene Name :</b>	PODXL2
<b>Protein Name :</b>	Podocalyxin-like protein 2
<b>Human Gene Id :</b>	50512
<b>Human Swiss Prot No :</b>	Q9NZ53
<b>Mouse Swiss Prot No :</b>	Q8CAE9
<b>Immunogen :</b>	Synthesized peptide derived from the Internal region of human Endoglycan.
<b>Specificity :</b>	Endoglycan Polyclonal Antibody detects endogenous levels of Endoglycan protein.
<b>Formulation :</b>	Liquid in PBS containing 50% glycerol, 0.5% BSA and 0.02% sodium azide.
<b>Source :</b>	Polyclonal, Rabbit,IgG
<b>Dilution :</b>	WB 1:500 - 1:2000. ELISA: 1:10000. Not yet tested in other applications.
<b>Purification :</b>	The antibody was affinity-purified from rabbit antiserum by affinity-chromatography using epitope-specific immunogen.
<b>Concentration :</b>	1 mg/ml
<b>Storage Stability :</b>	-15°C to -25°C/1 year(Do not lower than -25°C)
<b>Observed Band :</b>	65kD

**Background :**

This gene is a member of the CD34 family of cell surface transmembrane proteins, which are characterized by an N-terminal extracellular mucin domain, globular and stalk domains, a single pass transmembrane region, and a charged cytoplasmic tail. The encoded protein is a ligand for vascular selectins. [provided by RefSeq, Oct 2012],

**Function :**

PTM:Glycosylated; contains chondroitin sulfate. Displays sialylated O-linked oligosaccharides.,PTM:Sulfation and sialylated O-linked oligosaccharides are necessary for SELL/L-selectin binding.,similarity:Belongs to the podocalyxin family.,subunit:Homodimer; disulfide-linked. Binds to SELL/L-selectin.,tissue specificity:Highly expressed in brain. Moderately expressed in pancreas, kidney and lymphoid node. Weakly expressed in liver. Detected in both endothelial cells and CD34+ bone marrow cells.,

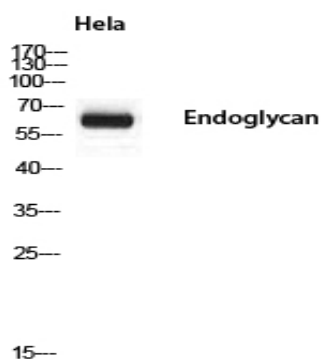
**Subcellular Location :**

Membrane ; Single-pass type I membrane protein .

**Expression :**

Expressed in T-cells, B-cells and monocytes. Expression is higher on memory and germinal center cells than on naive B-cells (at protein level). Highly expressed in brain. Moderately expressed in pancreas, kidney and lymphoid node. Weakly expressed in liver. Detected in both endothelial cells and CD34+ bone marrow cells.

## Products Images



Western blot analysis of HeLa using Endoglycan antibody.  
Secondary antibody(catalog#:RS0002) was diluted at 1:20000