

Dectin-2 Polyclonal Antibody

Catalog No :	YT5685
Reactivity :	Human;Rat;Mouse;
Applications :	WB;IHC;IF;ELISA
Target :	Dectin-2
Fields :	>>C-type lectin receptor signaling pathway
Gene Name :	CLEC6A
Protein Name :	C-type lectin domain family 6 member A
Human Gene Id :	93978
Human Swiss Prot No :	Q6EIG7
Mouse Swiss Prot No :	Q9JKF4
Immunogen :	Synthesized peptide derived from the Internal region of human Dectin-2.
Specificity :	Dectin-2 Polyclonal Antibody detects endogenous levels of Dectin-2 protein.
Formulation :	Liquid in PBS containing 50% glycerol, 0.5% BSA and 0.02% sodium azide.
Source :	Polyclonal, Rabbit,IgG
Dilution :	WB 1:500 - 1:2000. IHC: 1:100-1:300. ELISA: 1:10000.. IF 1:50-200
Purification :	The antibody was affinity-purified from rabbit antiserum by affinity-chromatography using epitope-specific immunogen.
Concentration :	1 mg/ml
Storage Stability :	-15°C to -25°C/1 year(Do not lower than -25°C)

Observed Band : 23kD

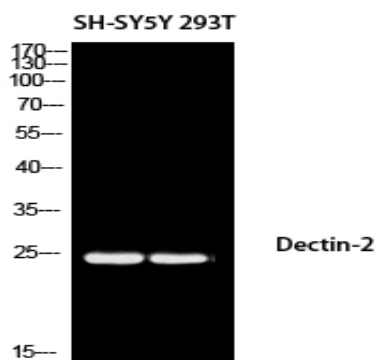
Background : The protein encoded by this gene is a type II membrane receptor with an extracellular C-type lectin-like domain fold. The extracellular portion binds structures with a high mannose content and has been shown to recognize several pathogens, including *C. elegans*, *S. cerevisiae*, *M. tuberculosis*, *C. neoformans*, and house dust mite. When stimulated, the encoded protein initiates signalling through the CARD9-Bcl10-Malt1 pathway, leading to the induction of cytokines. Two transcript variants encoding different isoforms have been found for this gene. [provided by RefSeq, Dec 2015],

Function : function:May be involved in regulating immune reactivity.,similarity:Contains 1 C-type lectin domain.,tissue specificity:Expressed in dendritic cells.,

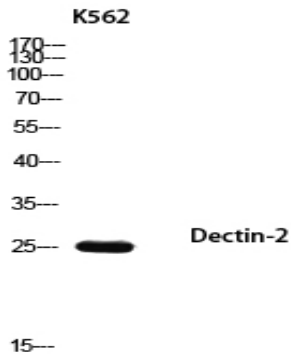
Subcellular Location : Cell membrane ; Single-pass type II membrane protein .

Expression : Expressed in lung, spleen, lymph node, leukocytes, bone marrow, tonsils and dendritic cells. Strongly expressed in purified monocytes and weakly in B-cells. In peripheral blood cells, preferentially expressed in plasmacytoids rather than myeloids.

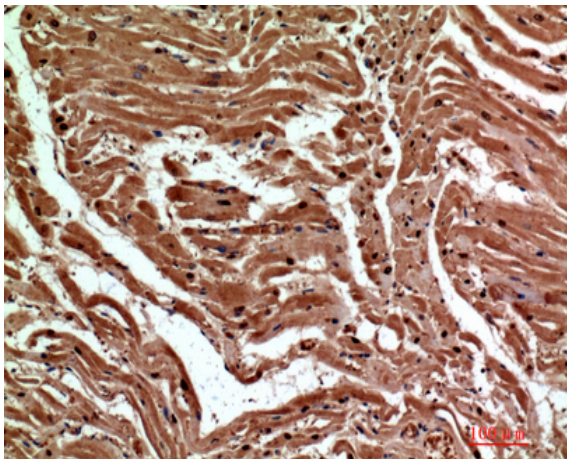
Products Images



Western blot analysis of SH-SY5Y 293T using Dectin-2 antibody. Antibody was diluted at 1:1000. Secondary antibody(catalog#:RS0002) was diluted at 1:20000



Western blot analysis of K562 using Dectin-2 antibody. Antibody was diluted at 1:1000. Secondary antibody(catalog#:RS0002) was diluted at 1:20000



Immunohistochemical analysis of paraffin-embedded human-heart, antibody was diluted at 1:200