

Axl Polyclonal Antibody

Catalog No :	YT5690
Reactivity :	Human;Mouse;Rat
Applications :	WB;ELISA
Target :	Axl
Fields :	>>EGFR tyrosine kinase inhibitor resistance
Gene Name :	AXL UFO
Protein Name :	Tyrosine-protein kinase receptor UFO
Human Gene Id :	558
Human Swiss Prot No :	P30530
Mouse Gene Id :	26362
Mouse Swiss Prot No :	Q00993
Immunogen :	Synthesized peptide derived from Axl . at AA range: 630-710
Specificity :	Axl Polyclonal Antibody detects endogenous levels of Axl protein.
Formulation :	Liquid in PBS containing 50% glycerol, 0.5% BSA and 0.02% sodium azide.
Source :	Polyclonal, Rabbit,IgG
Dilution :	WB 1:500 - 1:2000. ELISA: 1:10000. Not yet tested in other applications.
Purification :	The antibody was affinity-purified from rabbit antiserum by affinity-chromatography using epitope-specific immunogen.
Concentration :	1 mg/ml

Storage Stability : -15°C to -25°C/1 year(Do not lower than -25°C)

Observed Band : 130kD

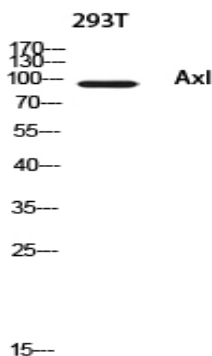
Background : The protein encoded by this gene is a member of the Tyro3-Axl-Mer (TAM) receptor tyrosine kinase subfamily. The encoded protein possesses an extracellular domain which is composed of two immunoglobulin-like motifs at the N-terminal, followed by two fibronectin type-III motifs. It transduces signals from the extracellular matrix into the cytoplasm by binding to the vitamin K-dependent protein growth arrest-specific 6 (Gas6). This gene may be involved in several cellular functions including growth, migration, aggregation and anti-inflammation in multiple cell types. Alternative splicing results in multiple transcript variants of this gene. [provided by RefSeq, Jul 2013],

Function : catalytic activity:ATP + a [protein]-L-tyrosine = ADP + a [protein]-L-tyrosine phosphate.,disease:Has transforming potential in patients with chronic myeloproliferative disorder or chronic myelocytic leukemia.,function:May function as a signal transducer between specific cell types of mesodermal origin. In case of filovirus infection, seems to function as a cell entry factor.,similarity:Belongs to the protein kinase superfamily. Tyr protein kinase family. AXL/UFO subfamily.,similarity:Contains 1 protein kinase domain.,similarity:Contains 2 fibronectin type-III domains.,similarity:Contains 2 Ig-like C2-type (immunoglobulin-like) domains.,subunit:Heterodimer and heterotetramer with GAS6.,tissue specificity:Highly expressed in metastatic colon tumors. Expressed in primary colon tumors. Weakly expressed in normal colon tissue.,

Subcellular Location : Cell membrane ; Single-pass type I membrane protein .

Expression : Highly expressed in metastatic colon tumors. Expressed in primary colon tumors. Weakly expressed in normal colon tissue.

Products Images



Western blot analysis of 293T using Axl antibody. Antibody was diluted at 1:500. Secondary antibody(catalog#:RS0002) was diluted at 1:20000