

SCGF Polyclonal Antibody

| | |
|------------------------------|---|
| Catalog No : | YT5719 |
| Reactivity : | Human;Mouse |
| Applications : | WB;IHC;IF;ELISA |
| Target : | SCGF |
| Gene Name : | CLEC11A |
| Protein Name : | C-type lectin domain family 11 member A |
| Human Gene Id : | 6320 |
| Human Swiss Prot No : | Q9Y240 |
| Mouse Gene Id : | 20256 |
| Mouse Swiss Prot No : | O88200 |
| Rat Gene Id : | 29313 |
| Rat Swiss Prot No : | O88201 |
| Immunogen : | The antiserum was produced against synthesized peptide derived from the N-terminal region of human CLEC11A. AA range:1-50 |
| Specificity : | SCGF Polyclonal Antibody detects endogenous levels of SCGF protein. |
| Formulation : | Liquid in PBS containing 50% glycerol, 0.5% BSA and 0.02% sodium azide. |
| Source : | Polyclonal, Rabbit,IgG |
| Dilution : | WB 1:500 - 1:2000. IHC: 1:100-1:300. ELISA: 1:10000.. IF 1:50-200 |
| Purification : | The antibody was affinity-purified from rabbit antiserum by affinity-chromatography using epitope-specific immunogen. |

Concentration : 1 mg/ml

Storage Stability : -15°C to -25°C/1 year(Do not lower than -25°C)

Observed Band : 30kD

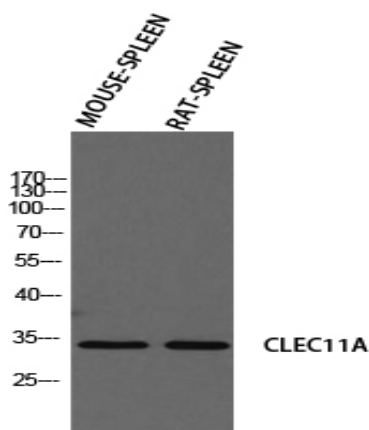
Background : This gene encodes a member of the C-type lectin superfamily. The encoded protein is a secreted sulfated glycoprotein and functions as a growth factor for primitive hematopoietic progenitor cells. An alternative splice variant has been described but its biological nature has not been determined. [provided by RefSeq, Jul 2008],

Function : developmental stage:In the bone marrow, expression is limited to immature neutrophils. Expression was not detected in circulating mature neutrophils.,function:Stimulates the proliferation and differentiation of hematopoietic precursor cells from various lineages, including erythrocytes, lymphocytes, granulocytes and macrophages. Acts synergistically with other cytokines, including IL-3, GCSF, GMCSF and FLT3 ligand. Suppresses SCF-stimulated erythrocyte proliferation.,online information:Stem cell growth factor,PTM:O-glycosylated. Probably sulfated on the O-glycans.,similarity:Contains 1 C-type lectin domain.,tissue specificity:Expressed in skeletal tissues including bone marrow, chondrocytes, primary ossification center-associated cells, the perichondrium and periosteum. Lower levels of expression were detected in spleen, thymus, appendix and fetal liver.,

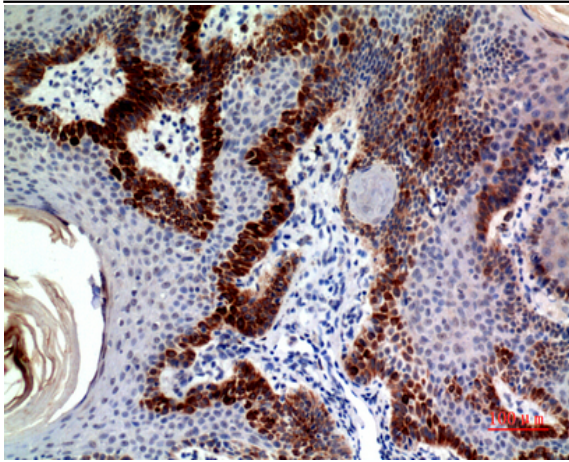
Subcellular Location : Cytoplasm . Secreted .

Expression : Expressed in skeletal tissues including bone marrow, chondrocytes, primary ossification center-associated cells, the perichondrium and periosteum. Lower levels of expression were detected in spleen, thymus, appendix and fetal liver.

Products Images



Western blot analysis of MOUSE-SPLEEN RAT-SPLEEN using CLEC11A antibody. Antibody was diluted at 1:2000. Secondary antibody(catalog#:RS0002) was diluted at 1:20000



Immunohistochemical analysis of paraffin-embedded human skin, antibody was diluted at 1:100