

## IL-1F5 Polyclonal Antibody

<b>Catalog No :</b>	YT5720
<b>Reactivity :</b>	Human;Mouse;Rat
<b>Applications :</b>	WB;ELISA
<b>Target :</b>	IL-1F5
<b>Fields :</b>	>>Cytokine-cytokine receptor interaction
<b>Gene Name :</b>	IL36RN
<b>Protein Name :</b>	Interleukin-36 receptor antagonist protein
<b>Human Gene Id :</b>	26525
<b>Human Swiss Prot No :</b>	Q9UBH0
<b>Mouse Gene Id :</b>	54450
<b>Mouse Swiss Prot No :</b>	Q9QYY1
<b>Immunogen :</b>	The antiserum was produced against synthesized peptide derived from the Internal region of human IL36RN. AA range:1-50
<b>Specificity :</b>	IL-1F5 Polyclonal Antibody detects endogenous levels of IL-1F5 protein.
<b>Formulation :</b>	Liquid in PBS containing 50% glycerol, 0.5% BSA and 0.02% sodium azide.
<b>Source :</b>	Polyclonal, Rabbit,IgG
<b>Dilution :</b>	WB 1:500 - 1:2000. ELISA: 1:10000. Not yet tested in other applications.
<b>Purification :</b>	The antibody was affinity-purified from rabbit antiserum by affinity-chromatography using epitope-specific immunogen.
<b>Concentration :</b>	1 mg/ml

**Storage Stability :** -15°C to -25°C/1 year(Do not lower than -25°C)

**Observed Band :** 17kD

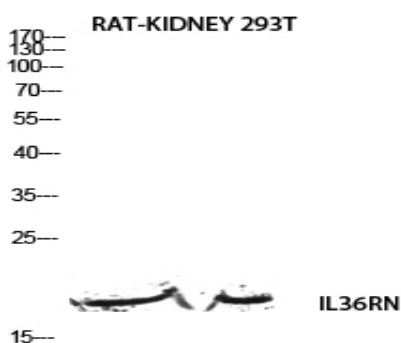
**Background :** The protein encoded by this gene is a member of the interleukin 1 cytokine family. This cytokine was shown to specifically inhibit the activation of NF-kappaB induced by interleukin 1 family, member 6 (IL1F6). This gene and eight other interleukin 1 family genes form a cytokine gene cluster on chromosome 2. Two alternatively spliced transcript variants encoding the same protein have been reported. [provided by RefSeq, Jul 2008],

**Function :** function:Is a highly and a specific antagonist of the IL-1 receptor-related protein 2-mediated response to interleukin 1 family member 9 (IL1F9). Could constitute part of an independent signaling system analogous to interleukin-1 alpha (IL-1A), beta (IL-1B) receptor agonist and interleukin-1 receptor type I (IL-1R1), that is present in epithelial barriers and takes part in local inflammatory response.,induction:By phorbol ester (PMA) and lipopolysaccharide (LPS) treatment in macrophage cell line.,online information:Interleukin-1 entry,similarity:Belongs to the IL-1 family.,tissue specificity:Predominantly expressed in keratinocytes but not in fibroblasts, endothelial cells or melanocytes. Detected also in the spleen, brain leukocyte and macrophage cell types. Increased in lesional psoriasis skin.,

**Subcellular Location :** Cytoplasm . Secreted . The secretion is dependent on protein unfolding and facilitated by the cargo receptor TMED10; it results in protein translocation from the cytoplasm into the ERGIC (endoplasmic reticulum-Golgi intermediate compartment) followed by vesicle entry and secretion. .

**Expression :** Predominantly expressed in skin keratinocytes but not in fibroblasts, endothelial cells or melanocytes. Detected also in the spleen, brain leukocyte and macrophage cell types. Increased in lesional psoriasis skin.

## Products Images



Western blot analysis of RAT-KIDNEY 293T lysis using IL36RN antibody. Antibody was diluted at 1:500. Secondary antibody(catalog#:RS0002) was diluted at 1:20000