

IL-22 Polyclonal Antibody

Catalog No :	YT5722
Reactivity :	Human;Mouse;Rat
Applications :	WB;ELISA
Target :	IL-22
Fields :	>>Cytokine-cytokine receptor interaction;>>JAK-STAT signaling pathway;>>Th17 cell differentiation;>>Inflammatory bowel disease
Gene Name :	IL22
Protein Name :	Interleukin-22
Human Gene Id :	50616
Human Swiss Prot No :	Q9GZX6
Mouse Gene Id :	50929
Mouse Swiss Prot No :	Q9JJY9
Immunogen :	The antiserum was produced against synthesized peptide derived from the C-terminal region of human IL22. AA range:121-170
Specificity :	IL-22 Polyclonal Antibody detects endogenous levels of IL-22 protein.
Formulation :	Liquid in PBS containing 50% glycerol, 0.5% BSA and 0.02% sodium azide.
Source :	Polyclonal, Rabbit,IgG
Dilution :	WB 1:500 - 1:2000. ELISA: 1:10000. Not yet tested in other applications.
Purification :	The antibody was affinity-purified from rabbit antiserum by affinity-chromatography using epitope-specific immunogen.
Concentration :	1 mg/ml

Storage Stability : -15°C to -25°C/1 year(Do not lower than -25°C)

Observed Band : 22kD

Cell Pathway : Cytokine-cytokine receptor interaction;Jak_STAT;

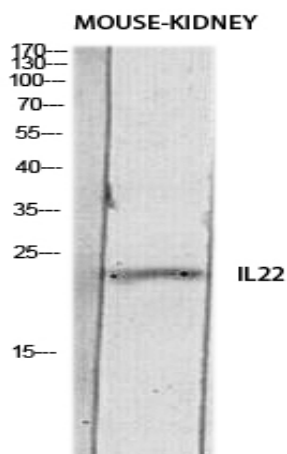
Background : function:Cytokine that contributes to the inflammatory response in vivo.,similarity:Belongs to the IL-10 family.,

Function : function:Cytokine that contributes to the inflammatory response in vivo.,similarity:Belongs to the IL-10 family.,

Subcellular Location : Secreted.

Expression : Blood,PCR rescued clones,

Products Images



Western blot analysis of MOUSE-KIDNEY lysis using IL22 antibody. Antibody was diluted at 1:500. Secondary antibody(catalog#:RS0002) was diluted at 1:20000