

## CMTM8 Polyclonal Antibody

<b>Catalog No :</b>	YT5728
<b>Reactivity :</b>	Human;Mouse
<b>Applications :</b>	WB;IHC;IF;ELISA
<b>Target :</b>	CMTM8
<b>Gene Name :</b>	CMTM8
<b>Protein Name :</b>	CKLF-like MARVEL transmembrane domain-containing protein 8
<b>Human Gene Id :</b>	152189
<b>Human Swiss Prot No :</b>	Q8IZV2
<b>Mouse Gene Id :</b>	70031
<b>Mouse Swiss Prot No :</b>	Q9CZR4
<b>Immunogen :</b>	The antiserum was produced against synthesized peptide derived from the Internal region of human CMTM8. AA range:101-150
<b>Specificity :</b>	CMTM8 Polyclonal Antibody detects endogenous levels of CMTM8 protein.
<b>Formulation :</b>	Liquid in PBS containing 50% glycerol, 0.5% BSA and 0.02% sodium azide.
<b>Source :</b>	Polyclonal, Rabbit,IgG
<b>Dilution :</b>	WB 1:500 - 1:2000. IHC: 1:100-1:300. ELISA: 1:10000.. IF 1:50-200
<b>Purification :</b>	The antibody was affinity-purified from rabbit antiserum by affinity-chromatography using epitope-specific immunogen.
<b>Concentration :</b>	1 mg/ml
<b>Storage Stability :</b>	-15°C to -25°C/1 year(Do not lower than -25°C)

**Observed Band :** 20kD**Background :**

This gene belongs to the chemokine-like factor gene superfamily, a novel family that is similar to the chemokine and the transmembrane 4 superfamilies. This gene is one of several chemokine-like factor genes located in a cluster on chromosome 3. This gene acts as a tumor suppressor, and plays a role in regulating the migration of tumor cells. The encoded protein is thought to function as a negative regulator of epidermal growth factor-induced signaling. Alternative splicing results in multiple transcript variants encoding different isoforms. [provided by RefSeq, Feb 2016],

**Function :**

similarity:Belongs to the chemokine-like factor family.,similarity:Contains 1 MARVEL domain.,tissue specificity:Highly expressed in liver and pancreas.,

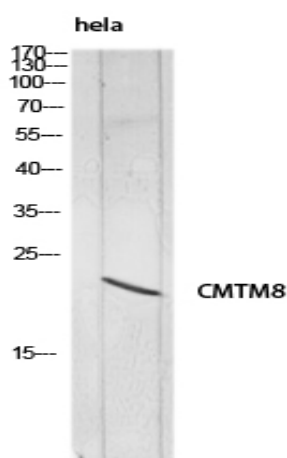
**Subcellular Location :**

[Isoform 1]: Membrane; Multi-pass membrane protein.; [Isoform 2]: Cytoplasm. Nucleus.

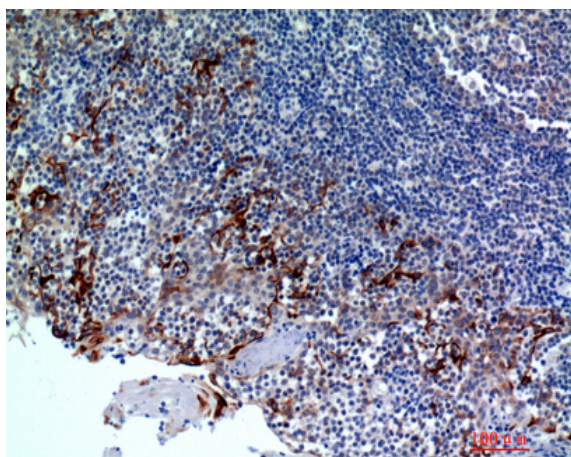
**Expression :**

Highly expressed in liver and pancreas.

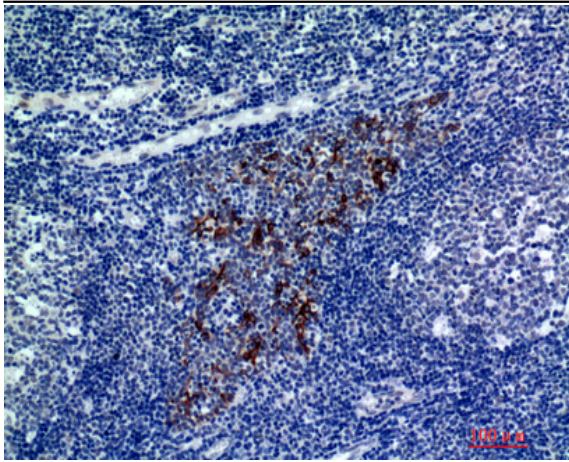
## Products Images



Western blot analysis of HeLa lysis using CMTM8 antibody. Secondary antibody (catalog#:RS0002) was diluted at 1:20000



Immunohistochemical analysis of paraffin-embedded human tonsils, antibody was diluted at 1:200



Immunohistochemical analysis of paraffin-embedded human-tonsils, antibody was diluted at 1:200