

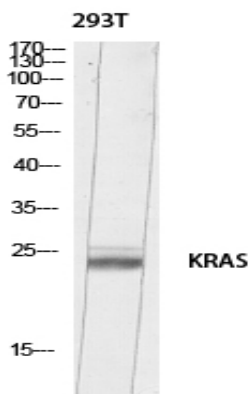
K-Ras Polyclonal Antibody

Catalog No :	YT5739
Reactivity :	Human;Mouse;Rat
Applications :	WB;IHC;IF;ELISA
Target :	K-Ras
Fields :	>>EGFR tyrosine kinase inhibitor resistance;>>Endocrine resistance;>>MAPK signaling pathway;>>ErbB signaling pathway;>>Ras signaling pathway;>>Rap1 signaling pathway;>>Chemokine signaling pathway;>>FoxO signaling pathway;>>Sphingolipid signaling pathway;>>Phospholipase D signaling pathway;>>Mitophagy - animal;>>Autophagy - animal;>>mTOR signaling pathway;>>PI3K-Akt signaling pathway;>>Apoptosis;>>Longevity regulating pathway;>>Longevity regulating pathway - multiple species;>>Cellular senescence;>>Axon guidance;>>VEGF signaling pathway;>>Apelin signaling pathway;>>Gap junction;>>Signaling pathways regulating pluripotency of stem cells;>>C-type lectin receptor signaling pathway;>>Natural killer cell mediated cytotoxicity;>>T cell receptor signaling pathway;>>B cell receptor signaling pathway;>>Fc epsilon RI signaling pathway;>>Thermogenesis;>>Long-term potentiation;>>Neurotrophin signaling pathway;>>Cholinergic synapse;>>Serotonergic synapse;>>Long-term depression;>>Regulation of actin
Gene Name :	KRAS
Protein Name :	v-Ki-ras2 Kirsten rat sarcoma viral oncogene homolog
Human Gene Id :	3845
Human Swiss Prot No :	P01116
Mouse Gene Id :	16653
Mouse Swiss Prot No :	P32883
Rat Swiss Prot No :	P08644
Immunogen :	The antiserum was produced against synthesized peptide derived from the C-terminal region of human KRAS. AA range:150-189

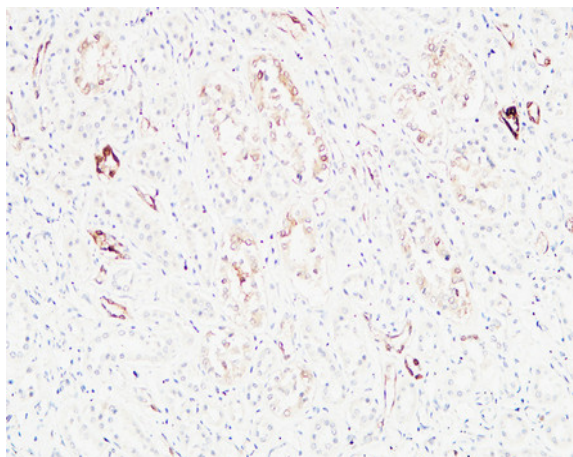
Specificity :	K-Ras Polyclonal Antibody detects endogenous levels of v-Ki-ras2 Kirsten rat sarcoma viral oncogene homolog
Formulation :	Liquid in PBS containing 50% glycerol, 0.5% BSA and 0.02% sodium azide.
Source :	Polyclonal, Rabbit,IgG
Dilution :	IHC: 100-300.WB 1:500 - 1:2000. ELISA: 1:10000.. IF 1:50-200
Purification :	The antibody was affinity-purified from rabbit antiserum by affinity-chromatography using epitope-specific immunogen.
Concentration :	1 mg/ml
Storage Stability :	-15°C to -25°C/1 year(Do not lower than -25°C)
Observed Band :	22kD
Cell Pathway :	MAPK_ERK_Growth;MAPK_G_Protein;ErbB_HER;Chemokine;Dorso-ventral axis formation;Axon guidance;VEGF;Tight junction;Gap junction;Natural killer cell mediated cytotoxicity;T_Cell_Receptor;B_Cell_Antigen;F
Background :	This gene, a Kirsten ras oncogene homolog from the mammalian ras gene family, encodes a protein that is a member of the small GTPase superfamily. A single amino acid substitution is responsible for an activating mutation. The transforming protein that results is implicated in various malignancies, including lung adenocarcinoma, mucinous adenoma, ductal carcinoma of the pancreas and colorectal carcinoma. Alternative splicing leads to variants encoding two isoforms that differ in the C-terminal region. [provided by RefSeq, Jul 2008],
Function :	alternative products:Isoforms differ in the C-terminal region which is encoded by two alternative exons (IVA and IVB),disease:Defects in KRAS are a cause of acute myelogenous leukemia (AML) [MIM:601626]. AML is a malignant disease in which hematopoietic precursors are arrested in an early stage of development.,disease:Defects in KRAS are a cause of cardiofaciocutaneous syndrome (CFC syndrome) [MIM:115150]; also known as cardio-facio-cutaneous syndrome. CFC syndrome is characterized by a distinctive facial appearance, heart defects and mental retardation. Heart defects include pulmonic stenosis, atrial septal defects and hypertrophic cardiomyopathy. Some affected individuals present with ectodermal abnormalities such as sparse, friable hair, hyperkeratotic skin lesions and a generalized ichthyosis-like condition. Typical facial features are similar to Noonan syndrome. They include high fo
Subcellular Location :	Cell membrane ; Lipid-anchor ; Cytoplasmic side . Endomembrane system . Cytoplasm, cytosol .; [Isoform 2B]: Cell membrane ; Lipid-anchor .

Expression : Brain,Cervix carcinoma,Colon carcinoma,Gallbladder tumor,Lung,Lung carcinom

Products Images



Western blot analysis of 293T lysis using KRAS antibody. Antibody was diluted at 1:500. Secondary antibody(catalog#:RS0002) was diluted at 1:20000



Immunohistochemical analysis of paraffin-embedded Human kidney. 1, Antibody was diluted at 1:200(4° overnight). 2, High-pressure and temperature EDTA, pH8.0 was used for antigen retrieval. 3,Secondary antibody was diluted at 1:200(room temperature, 30min).