

MUM1 Polyclonal Antibody

Catalog No :	YT5753
Reactivity :	Human;Mouse;Rat
Applications :	WB;ELISA;IHC
Target :	MUM1
Gene Name :	MUM1 EXPAND1
Protein Name :	MUM1
Human Gene Id :	84939
Human Swiss Prot No :	Q2TAK8
Mouse Gene Id :	68114
Mouse Swiss Prot No :	Q6DID5
Rat Swiss Prot No :	B1H224
Immunogen :	The antiserum was produced against synthesized peptide derived from the C-terminal region of human MUM1. AA range:661-710
Specificity :	MUM1 Polyclonal Antibody detects endogenous levels of MUM1
Formulation :	Liquid in PBS containing 50% glycerol, 0.5% BSA and 0.02% sodium azide.
Source :	Polyclonal, Rabbit,IgG
Dilution :	WB 1:500-2000;IHC 1:50-300; ELISA 2000-20000
Purification :	The antibody was affinity-purified from rabbit antiserum by affinity-chromatography using epitope-specific immunogen.
Concentration :	1 mg/ml

Storage Stability : -15°C to -25°C/1 year(Do not lower than -25°C)

Observed Band : 78kD

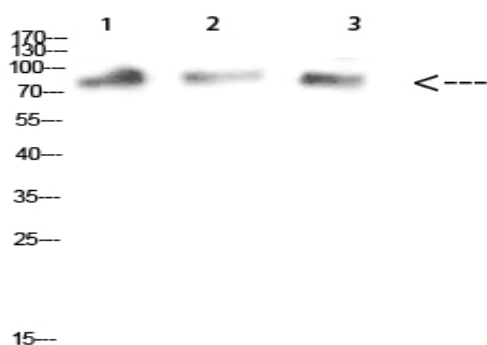
Background : PTM:Phosphorylated upon DNA damage, probably by ATM or ATR.,similarity:Belongs to the MUM1 family.,

Function : PTM:Phosphorylated upon DNA damage, probably by ATM or ATR.,similarity:Belongs to the MUM1 family.,

Subcellular Location : Nucleus . Recruited to DNA damage sites via its interaction with the BRCT domain of TP53BP1.

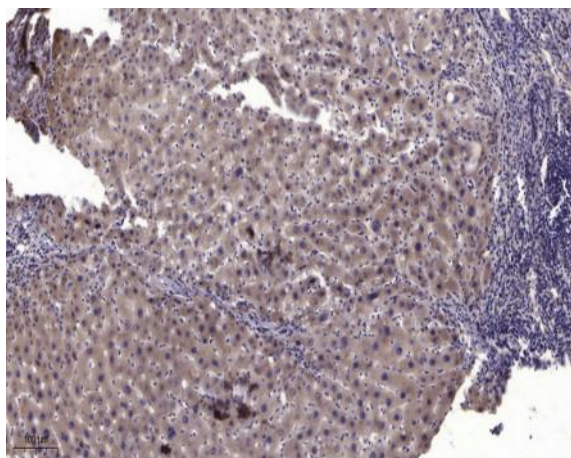
Expression : Brain,Melanoma,Placenta,PNS,Thyroid,

Products Images



1,mouse-kidney 2,mouse-heart 3,mouse-brain

Western Blot analysis of mouse-kidney mouse-heart mouse-brain cells using MUM1 Polyclonal Antibody diluted at 1:1000. Secondary antibody(catalog#:RS0002) was diluted at 1:20000



Immunohistochemical analysis of paraffin-embedded human liver cancer. 1, Antibody was diluted at 1:200(4° overnight). 2, Tris-EDTA,pH9.0 was used for antigen retrieval. 3,Secondary antibody was diluted at 1:200(room temperature, 45min).