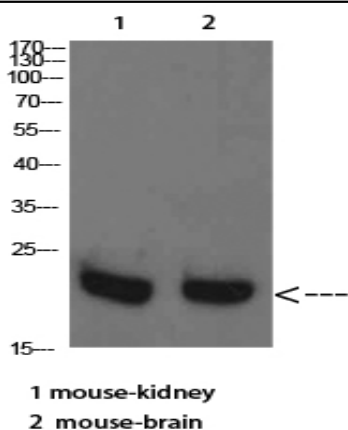


RHEB Polyclonal Antibody

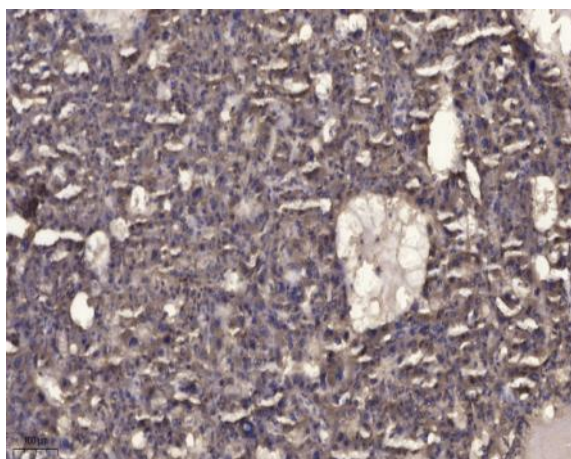
Catalog No :	YT5757
Reactivity :	Human;Mouse;Rat;Predicted:Cow
Applications :	WB;ELISA;IHC
Target :	RHEB
Fields :	>>Phospholipase D signaling pathway;>>Autophagy - animal;>>mTOR signaling pathway;>>PI3K-Akt signaling pathway;>>AMPK signaling pathway;>>Longevity regulating pathway;>>Cellular senescence;>>Thermogenesis;>>Insulin signaling pathway;>>Thyroid hormone signaling pathway;>>Human cytomegalovirus infection;>>Human papillomavirus infection;>>Herpes simplex virus 1 infection;>>Choline metabolism in cancer
Gene Name :	RHEB RHEB2
Protein Name :	RHEB
Human Gene Id :	6009
Human Swiss Prot No :	Q15382
Mouse Gene Id :	19744
Mouse Swiss Prot No :	Q921J2
Rat Swiss Prot No :	Q62639
Immunogen :	Synthetic Peptide of RHEB
Specificity :	This antibody detects endogenous levels of RHEB Polyclonal Antibody at Human;Mouse;Rat;Predicted:Cow, It doesn't react with total protein.
Formulation :	Liquid in PBS containing 50% glycerol, 0.5% BSA and 0.02% sodium azide.
Source :	Polyclonal, Rabbit,IgG

Dilution :	WB 1:500-2000;IHC 1:50-300; ELISA 2000-20000
Purification :	The antibody was affinity-purified from rabbit antiserum by affinity-chromatography using epitope-specific immunogen.
Concentration :	1 mg/ml
Storage Stability :	-15°C to -25°C/1 year(Do not lower than -25°C)
Observed Band :	20kD
Cell Pathway :	mTOR;Insulin_Receptor;
Background :	This gene is a member of the small GTPase superfamily and encodes a lipid-anchored, cell membrane protein with five repeats of the RAS-related GTP-binding region. This protein is vital in regulation of growth and cell cycle progression due to its role in the insulin/TOR/S6K signaling pathway. The protein has GTPase activity and shuttles between a GDP-bound form and a GTP-bound form, and farnesylation of the protein is required for this activity. Three pseudogenes have been mapped, two on chromosome 10 and one on chromosome 22. [provided by RefSeq, Jul 2008],
Function :	function:Not known; binds GTP and exhibits intrinsic GTPase activity.,similarity:Belongs to the small GTPase superfamily. Rheb family.,tissue specificity:Ubiquitous. Highest levels observed in skeletal and cardiac muscle.,
Subcellular Location :	Endomembrane system ; Lipid-anchor ; Cytoplasmic side . Golgi apparatus membrane ; Lipid-anchor ; Cytoplasmic side . Cytoplasm, cytosol . Endoplasmic reticulum membrane ; Lipid-anchor ; Cytoplasmic side .
Expression :	Ubiquitous. Highest levels observed in skeletal and cardiac muscle.

Products Images



Western Blot analysis of mouse-kidney mouse-brain cells using RHEB Polyclonal Antibody diluted at 1:2000. Secondary antibody(catalog#:RS0002) was diluted at 1:20000



Immunohistochemical analysis of paraffin-embedded human liver cancer. 1, Antibody was diluted at 1:200(4° overnight). 2, Tris-EDTA,pH9.0 was used for antigen retrieval. 3,Secondary antibody was diluted at 1:200(room temperature, 45min).