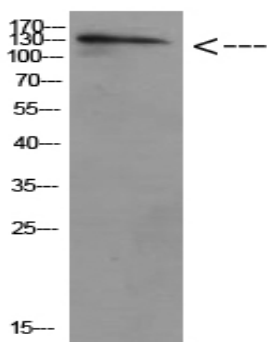


ULK2 Polyclonal Antibody

Catalog No :	YT5809
Reactivity :	Human;Mouse;Rat
Applications :	WB;ELISA
Target :	ULK2
Fields :	>>Autophagy - other;>>Autophagy - animal;>>mTOR signaling pathway;>>Alzheimer disease;>>Amyotrophic lateral sclerosis;>>Huntington disease;>>Spinocerebellar ataxia;>>Pathways of neurodegeneration - multiple diseases
Gene Name :	ULK2 KIAA0623
Protein Name :	unc-51-like kinase 2 (C. elegans)
Human Gene Id :	9706
Human Swiss Prot No :	Q8IYT8
Mouse Gene Id :	29869
Mouse Swiss Prot No :	Q9QY01
Immunogen :	Synthetic peptide from human protein at AA range: 930-1000
Specificity :	The antibody detects endogenous ULK2 protein
Formulation :	Liquid in PBS containing 50% glycerol, 0.5% BSA and 0.02% sodium azide.
Source :	Polyclonal, Rabbit,IgG
Dilution :	WB 1:500-2000, ELISA 1:10000-20000
Purification :	The antibody was affinity-purified from rabbit antiserum by affinity-chromatography using epitope-specific immunogen.

Concentration :	1 mg/ml
Storage Stability :	-15°C to -25°C/1 year(Do not lower than -25°C)
Observed Band :	140kD
Cell Pathway :	Regulation of autophagy;mTOR;
Background :	unc-51 like autophagy activating kinase 2(ULK2) Homo sapiens This gene encodes a protein that is similar to a serine/threonine kinase in <i>C. elegans</i> which is involved in axonal elongation. The structure of this protein is similar to the <i>C. elegans</i> protein in that both proteins have an N-terminal kinase domain, a central proline/serine rich (PS) domain, and a C-terminal (C) domain. The gene is located within the Smith-Magenis syndrome region on chromosome 17. Alternatively spliced transcript variants encoding the same protein have been identified. [provided by RefSeq, Dec 2008],
Function :	catalytic activity:ATP + a protein = ADP + a phosphoprotein.,PTM:Autophosphorylated.,similarity:Belongs to the protein kinase superfamily. Ser/Thr protein kinase family. APG1/unc-51/ULK1 subfamily.,similarity:Contains 1 protein kinase domain.,
Subcellular Location :	Cytoplasmic vesicle membrane ; Peripheral membrane protein . Localizes to pre-autophagosomal membrane.
Expression :	Brain,Testis,

Products Images



Western Blot analysis of HELA cells using Antibody diluted at 500. Secondary antibody(catalog#:RS0002) was diluted at 1:20000