

GCK/GLK Polyclonal Antibody

Catalog No :	YT6093
Reactivity :	Human;Rat
Applications :	WB;ELISA
Target :	GCK/GLK
Fields :	>>MAPK signaling pathway
Gene Name :	MAP4K2/MAP4K3
Protein Name :	GCK/GLK
Human Gene Id :	5871/8491
Human Swiss Prot No :	Q12851/Q8IVH8
Immunogen :	Synthesized peptide derived from human GCK/GLK. at AA range: 221-270
Specificity :	GCK/GLK Polyclonal Antibody detects endogenous levels of GCK/GLK
Formulation :	Liquid in PBS containing 50% glycerol, 0.5% BSA and 0.02% sodium azide.
Source :	Polyclonal, Rabbit,IgG
Dilution :	WB 1:500-2000, ELISA 1:10000-20000
Purification :	The antibody was affinity-purified from rabbit antiserum by affinity-chromatography using epitope-specific immunogen.
Concentration :	1 mg/ml
Storage Stability :	-15°C to -25°C/1 year(Do not lower than -25°C)
Observed Band :	100kD

Cell Pathway : MAPK_ERK_Growth;MAPK_G_Protein;

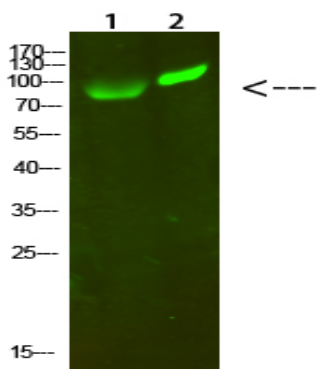
Background : mitogen-activated protein kinase kinase kinase kinase 2(MAP4K2) Homo sapiens The protein encoded by this gene is a member of the serine/threonine protein kinase family. Although this kinase is found in many tissues, its expression in lymphoid follicles is restricted to the cells of germinal centre, where it may participate in B-cell differentiation. This kinase can be activated by TNF-alpha, and has been shown to specifically activate MAP kinases. This kinase is also found to interact with TNF receptor-associated factor 2 (TRAF2), which is involved in the activation of MAP3K1/MEKK1. Alternative splicing results in multiple transcript variants. [provided by RefSeq, Apr 2015],

Function : catalytic activity:ATP + a protein = ADP + a phosphoprotein.,cofactor:Magnesium.,function:Enhances MAP3K1 oligomerization, which may relieve amino-terminal mediated MAP3K1 autoinhibition and lead to activation following autophosphorylation. May play a role in the regulation of vesicle targeting or fusion.,sequence caution:Contaminating sequence. Sequence of unknown origin in the N-terminal part.,similarity:Belongs to the protein kinase superfamily. STE Ser/Thr protein kinase family. STE20 subfamily.,similarity:Contains 1 CNH domain.,similarity:Contains 1 protein kinase domain.,subunit:Interacts with TRAF2, MAP3K1 and RAB8A.,tissue specificity:Highly expressed in germinal center but not mantle zone B-cells. Also expressed in lung, brain and placenta and at lower levels in other tissues examined.,

Subcellular Location : Cytoplasm . Basolateral cell membrane ; Peripheral membrane protein . Golgi apparatus membrane ; Peripheral membrane protein .

Expression : Highly expressed in germinal center but not mantle zone B-cells. Also expressed in lung, brain and placenta and at lower levels in other tissues examined.

Products Images



Western Blot analysis of 1,293T 2,hela cells using primary antibody diluted at 1:1000(4 °C overnight). Secondary antibody:Goat Anti-rabbit IgG IRDye 800(diluted at 1:5000, 25 °C, 1 hour)