

TMEPAI Polyclonal Antibody

Catalog No :	YT5861
Reactivity :	Human;Mouse
Applications :	WB;ELISA
Target :	TMEPAI
Gene Name :	PMEPA1 STAG1 TMEPAI
Protein Name :	TMEPAI
Human Gene Id :	56937
Human Swiss Prot No :	Q969W9
Mouse Swiss Prot No :	Q9D7R2
Immunogen :	Synthetic peptide from human protein at AA range: 240-287
Specificity :	The antibody detects endogenous TMEPAI
Formulation :	Liquid in PBS containing 50% glycerol, 0.5% BSA and 0.02% sodium azide.
Source :	Polyclonal, Rabbit,IgG
Dilution :	WB 1:500-2000, ELISA 1:10000-20000
Purification :	The antibody was affinity-purified from rabbit antiserum by affinity-chromatography using epitope-specific immunogen.
Concentration :	1 mg/ml
Storage Stability :	-15°C to -25°C/1 year(Do not lower than -25°C)
Observed Band :	36kD

Background :

This gene encodes a transmembrane protein that contains a Smad interacting motif (SIM). Expression of this gene is induced by androgens and transforming growth factor beta, and the encoded protein suppresses the androgen receptor and transforming growth factor beta signaling pathways through interactions with Smad proteins. Overexpression of this gene may play a role in multiple types of cancer. Alternatively spliced transcript variants encoding multiple isoforms have been observed for this gene. [provided by RefSeq, Dec 2011],

Function :

domain:The WW-binding motifs mediate interaction with NEDD4.,induction:By androgen.,similarity:Belongs to the PMEPA1 family.,subunit:Interacts with the WW domains of NEDD4.,tissue specificity:Highest expression in prostate. Also expressed in ovary.,

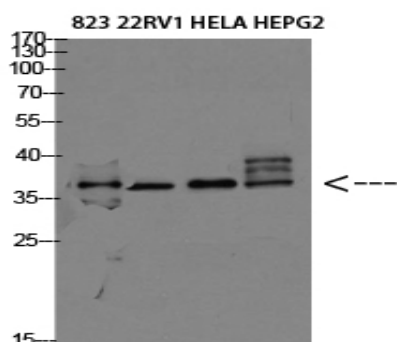
Subcellular Location :

Early endosome membrane; Single-pass membrane protein. Golgi apparatus membrane; Single-pass membrane protein.

Expression :

Highest expression in prostate. Also expressed in ovary.

Products Images



Western blot analysis of 823 22RV1 HELA HEPG2 Cell Lysate, antibody was diluted at 1:2000. Secondary antibody(catalog#:RS0002) was diluted at 1:20000