

Flotillin-1 Polyclonal Antibody

Catalog No :	YT6292
Reactivity :	Human;Mouse;Rat
Applications :	WB;ELISA
Target :	Flotillin-1
Fields :	>>Insulin signaling pathway
Gene Name :	FLOT1
Protein Name :	Flotillin-1
Human Gene Id :	10211
Human Swiss Prot No :	O75955
Immunogen :	Synthesized peptide derived from human Flotillin-1
Specificity :	This antibody detects endogenous levels of human Flotillin-1
Formulation :	Liquid in PBS containing 50% glycerol, 0.5% BSA and 0.02% sodium azide.
Source :	Polyclonal, Rabbit,IgG
Dilution :	WB 1:500-2000, ELISA(peptide)1:5000-20000
Purification :	The antibody was affinity-purified from rabbit antiserum by affinity-chromatography using epitope-specific immunogen.
Concentration :	1 mg/ml
Storage Stability :	-15°C to -25°C/1 year(Do not lower than -25°C)
Observed Band :	48kD

Background :

This gene encodes an protein that localizes to the caveolae, which are small domains on the inner cell membranes. This protein plays a role in vesicle trafficking and cell morphology. Alternative splicing results in multiple transcript variants. [provided by RefSeq, Jan 2016],

Function :

function:May act as a scaffolding protein within caveolar membranes, functionally participating in formation of caveolae or caveolae-like vesicles.,similarity:Belongs to the band 7/mec-2 family. Flotillin subfamily.,subcellular location:Membrane-associated protein of caveolae. Identified by mass spectrometry in melanosome fractions from stage I to stage IV.,subunit:Heterooligomeric complex of flotillin-1 and flotillin-2 and caveolin-1 and caveolin-2.,

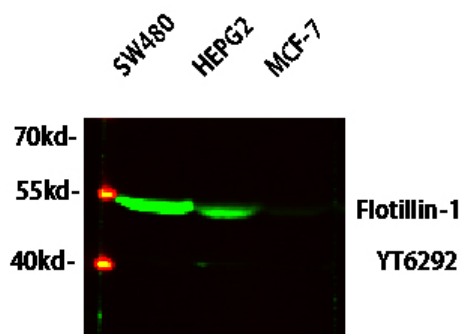
Subcellular Location :

Cell membrane; Peripheral membrane protein . Endosome . Membrane, caveola ; Peripheral membrane protein . Melanosome . Membrane raft . Identified by mass spectrometry in melanosome fractions from stage I to stage IV (PubMed:17081065). Membrane-associated protein of caveola (By similarity). .

Expression :

Adipose tissue,Adrenal gland,Lung,Peripheral blood leukocyte,Umbilical cord blood,

Products Images



Western blot analysis of various lysates, primary antibody was diluted at 1:1000, 4° over night, secondary antibody(cat: RS23920)was diluted at 1:10000, 37° 1hour.