

DC-LAMP Polyclonal Antibody

Catalog No :	YT5891
Reactivity :	Human;Rat;Mouse;
Applications :	WB;IHC;IF;ELISA
Target :	DC-LAMP
Fields :	>>Lysosome
Gene Name :	LAMP3 DCLAMP TSC403
Protein Name :	Lysosome-associated membrane glycoprotein 3 (LAMP-3) (Lysosomal-associated membrane protein 3) (DC-lysosome-associated membrane glycoprotein) (DC LAMP) (Protein TSC403) (CD antigen CD208)
Human Gene Id :	27074
Human Swiss Prot No :	Q9UQV4
Mouse Gene Id :	239739
Mouse Swiss Prot No :	Q7TST5
Immunogen :	Synthetic peptide from human protein at AA range: 261-310
Specificity :	The antibody detects endogenous DC-LAMP
Formulation :	Liquid in PBS containing 50% glycerol, 0.5% BSA and 0.02% sodium azide.
Source :	Polyclonal, Rabbit,IgG
Dilution :	WB 1:500-2000,IHC 1:500-200, ELISA 1:10000-20000. IF 1:50-200
Purification :	The antibody was affinity-purified from rabbit antiserum by affinity-chromatography using epitope-specific immunogen.
Concentration :	1 mg/ml

Storage Stability : -15°C to -25°C/1 year(Do not lower than -25°C)

Observed Band : 44kD

Cell Pathway : Lysosome;

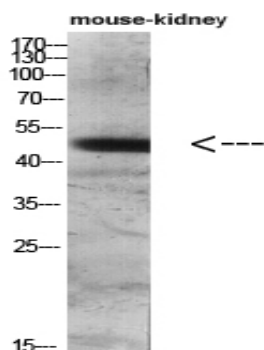
Background : Dendritic cells (DCs) are the most potent antigen-presenting cells. Immature DCs efficiently capture antigens and differentiate into interdigitating dendritic cells (IDCs) in lymphoid tissues that induce primary T-cell responses (summary by de Saint-Vis et al., 1998 [PubMed 9768752]).[supplied by OMIM, Dec 2010],

Function : function:Might change the lysosome function after the transfer of peptide-MHC class II molecules to the surface of dendritic cells.,similarity:Belongs to the LAMP family.,tissue specificity:Expressed in lymphoid organs and dendritic cells. Expressed in lung. Up-regulated in carcinomas of the esophagus, colon, rectum, ureter, stomach, breast, fallopian tube, thyroid and parotid tissues.,

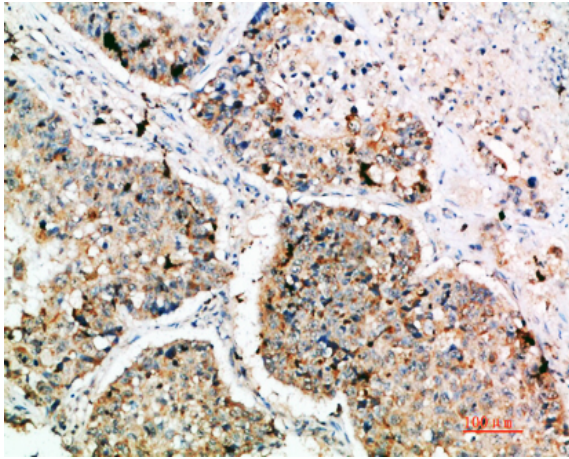
Subcellular Location : Cell surface . Lysosome membrane ; Single-pass type I membrane protein . Cytoplasmic vesicle membrane ; Single-pass type I membrane protein . Early endosome membrane ; Single-pass type I membrane protein . During dendritic cell maturation, detected on cytoplasmic vesicles (the MHC II compartment) that contain MHC II proteins, LAMP1, LAMP2 and LAMP3 (PubMed:9768752). Detected on lysosomes in mature dendritic cells (PubMed:9768752). .

Expression : Detected in tonsil interdigitating dendritic cells, in spleen, lymph node, Peyer's patches in the small intestine, in thymus medulla and in B-cells (at protein level). Expressed in lymphoid organs and dendritic cells. Expressed in lung. Up-regulated in carcinomas of the esophagus, colon, rectum, ureter, stomach, breast, fallopian tube, thyroid and parotid tissues.

Products Images



Western blot analysis of mouse-lung mouse-heart 293T Hela 3T3 lysate, antibody was diluted at 500. Secondary antibody(catalog#:RS0002) was diluted at 1:20000



Immunohistochemical analysis of paraffin-embedded human-lung-cancer, antibody was diluted at 1:200