

## CD108 Polyclonal Antibody

<b>Catalog No :</b>	YT5926
<b>Reactivity :</b>	Human;Mouse;Rat
<b>Applications :</b>	IHC;IF;ELISA
<b>Target :</b>	CD108
<b>Fields :</b>	>>Axon guidance
<b>Gene Name :</b>	SEMA7A CD108 SEMAL
<b>Protein Name :</b>	Semaphorin-7A (CDw108) (JMH blood group antigen) (John-Milton-Hargen human blood group Ag) (Semaphorin-K1) (Sema K1) (Semaphorin-L) (Sema L) (CD antigen CD108)
<b>Human Gene Id :</b>	8482
<b>Human Swiss Prot No :</b>	O75326
<b>Mouse Gene Id :</b>	20361
<b>Mouse Swiss Prot No :</b>	Q9QUR8
<b>Immunogen :</b>	Synthetic peptide from human protein at AA range: 101-150
<b>Specificity :</b>	The antibody detects endogenous CD108
<b>Formulation :</b>	Liquid in PBS containing 50% glycerol, 0.5% BSA and 0.02% sodium azide.
<b>Source :</b>	Polyclonal, Rabbit,IgG
<b>Dilution :</b>	IHC 1:50-200, ELISA 1:10000-20000. IF 1:50-200
<b>Purification :</b>	The antibody was affinity-purified from rabbit antiserum by affinity-chromatography using epitope-specific immunogen.
<b>Concentration :</b>	1 mg/ml

**Storage Stability :** -15°C to -25°C/1 year(Do not lower than -25°C)

**Cell Pathway :** Axon guidance;

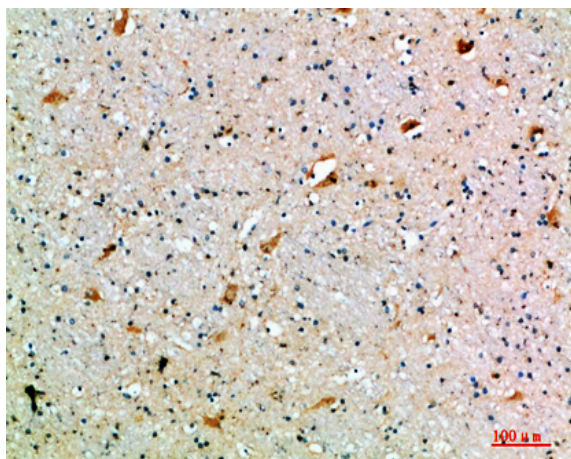
**Background :** This gene encodes a member of the semaphorin family of proteins. The encoded preprotein is proteolytically processed to generate the mature glycosylphosphatidylinositol (GPI)-anchored membrane glycoprotein. The encoded protein is found on activated lymphocytes and erythrocytes and may be involved in immunomodulatory and neuronal processes. The encoded protein carries the John Milton Hagen (JMH) blood group antigens. Mutations in this gene may be associated with reduced bone mineral density (BMD). Alternative splicing results in multiple transcript variants, at least one of which encodes an isoform that is proteolytically processed. [provided by RefSeq, Feb 2016],

**Function :** function:May play an important role in the nervous system and in modulating immune function.,online information:Blood group antigen gene mutation database,similarity:Belongs to the semaphorin family.,similarity:Contains 1 Ig-like C2-type (immunoglobulin-like) domain.,similarity:Contains 1 PSI domain.,similarity:Contains 1 Sema domain.,tissue specificity:Expressed in placenta, testis, ovary, spleen, brain, spinal chord, lung, heart, adrenal gland, lymph nodes, thymus, intestine and kidney.,

**Subcellular Location :** Cell membrane ; Lipid-anchor, GPI-anchor ; Extracellular side . Detected in a punctate pattern on the cell membrane of basal and supra-basal skin keratinocytes.

**Expression :** Detected in skin keratinocytes and on endothelial cells from skin blood vessels (at protein level). Expressed in fibroblasts, keratinocytes, melanocytes, placenta, testis, ovary, spleen, brain, spinal chord, lung, heart, adrenal gland, lymph nodes, thymus, intestine and kidney.

## Products Images



Immunohistochemical analysis of paraffin-embedded human-brain, antibody was diluted at 1:200