

IL-20 Polyclonal Antibody

Catalog No :	YT5962
Reactivity :	Human;Mouse;Rat
Applications :	IHC;IF;ELISA
Target :	IL-20
Fields :	>>Cytokine-cytokine receptor interaction;>>Viral protein interaction with cytokine and cytokine receptor;>>JAK-STAT signaling pathway
Gene Name :	IL20 ZCYTO10 UNQ852/PRO1801
Protein Name :	Interleukin-20 (IL-20) (Cytokine Zcyto10)
Human Gene Id :	50604
Human Swiss Prot No :	Q9NYY1
Mouse Gene Id :	58181
Mouse Swiss Prot No :	Q9JKV9
Immunogen :	Synthetic peptide from human protein at AA range: 81-130
Specificity :	The antibody detects endogenous IL-20
Formulation :	Liquid in PBS containing 50% glycerol, 0.5% BSA and 0.02% sodium azide.
Source :	Polyclonal, Rabbit,IgG
Dilution :	IHC 1:50-200, ELISA 1:10000-20000. IF 1:50-200
Purification :	The antibody was affinity-purified from rabbit antiserum by affinity-chromatography using epitope-specific immunogen.
Concentration :	1 mg/ml

Storage Stability : -15°C to -25°C/1 year(Do not lower than -25°C)

Cell Pathway : Cytokine-cytokine receptor interaction;Jak_STAT;

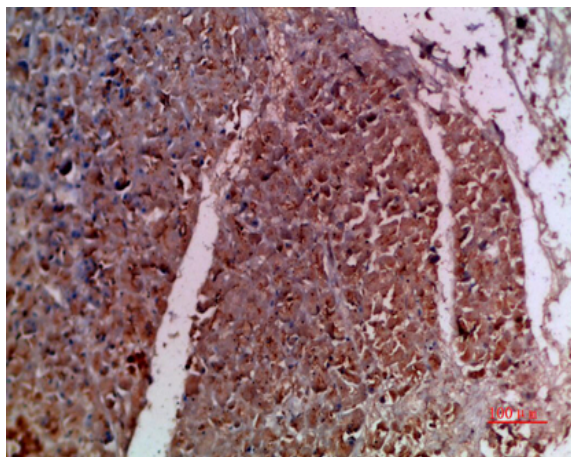
Background : The protein encoded by this gene is a cytokine structurally related to interleukin 10 (IL10). This cytokine has been shown to transduce its signal through signal transducer and activator of transcription 3 (STAT3) in keratinocytes. A specific receptor for this cytokine is found to be expressed in skin and upregulated dramatically in psoriatic skin, suggesting a role for this protein in epidermal function and psoriasis. [provided by RefSeq, Jul 2008],

Function : function:Cytokine that may be involved in epidermal function and psoriasis. Acts through STAT3.,similarity:Belongs to the IL-10 family.,tissue specificity:Expressed at very low levels in skin, trachea, and other tissues.,

Subcellular Location : Secreted.

Expression : Expressed in most tissues and five major cell types: epithelial cells (primarily skin, buccal mucosa, tongue, nasal mucosa, lung, ureter, breast, prostate, fallopian tube, and adrenal gland), myoepithelial cells (mainly prostate), endothelial cells (mainly in small vessels or capillaries), macrophages, and skeletal muscle. Isoform 2 was detected in the lung tissue only.

Products Images



Immunohistochemical analysis of paraffin-embedded human-pancreas, antibody was diluted at 1:200