

## LRP6 Polyclonal Antibody

<b>Catalog No :</b>	YN0042
<b>Reactivity :</b>	Human;Mouse
<b>Applications :</b>	WB;ELISA
<b>Target :</b>	LRP6
<b>Fields :</b>	>>mTOR signaling pathway;>>Wnt signaling pathway;>>Parathyroid hormone synthesis, secretion and action;>>Alzheimer disease;>>Pathways of neurodegeneration - multiple diseases;>>Pathways in cancer;>>Breast cancer;>>Hepatocellular carcinoma;>>Gastric cancer
<b>Gene Name :</b>	LRP6
<b>Protein Name :</b>	Low-density lipoprotein receptor-related protein 6 (LRP-6)
<b>Human Gene Id :</b>	4040
<b>Human Swiss Prot No :</b>	O75581
<b>Mouse Swiss Prot No :</b>	O88572
<b>Immunogen :</b>	Synthesized peptide derived from human protein . at AA range: 1420-1500
<b>Specificity :</b>	LRP6 Polyclonal Antibody detects endogenous levels of protein.
<b>Formulation :</b>	Liquid in PBS containing 50% glycerol, and 0.02% sodium azide.
<b>Source :</b>	Polyclonal, Rabbit,IgG
<b>Dilution :</b>	WB 1:500-2000 ELISA 1:5000-20000
<b>Purification :</b>	The antibody was affinity-purified from rabbit antiserum by affinity-chromatography using epitope-specific immunogen.
<b>Concentration :</b>	1 mg/ml

---

**Storage Stability :** -15°C to -25°C/1 year(Do not lower than -25°C)

---

**Observed Band :** 177kD

---

**Cell Pathway :** WNT;WNT-T CELL

---

**Background :** This gene encodes a member of the low density lipoprotein (LDL) receptor gene family. LDL receptors are transmembrane cell surface proteins involved in receptor-mediated endocytosis of lipoprotein and protein ligands. The protein encoded by this gene functions as a receptor or, with Frizzled, a co-receptor for Wnt and thereby transmits the canonical Wnt/beta-catenin signaling cascade. Through its interaction with the Wnt/beta-catenin signaling cascade this gene plays a role in the regulation of cell differentiation, proliferation, and migration and the development of many cancer types. This protein undergoes gamma-secretase dependent RIP- (regulated intramembrane proteolysis) processing but the precise locations of the cleavage sites have not been determined.[provided by RefSeq, Dec 2009],

---

**Function :** disease:Defects in LRP6 are the cause of autosomal dominant coronary artery disease type 2 (ADCAD2) [MIM:610947].,domain:The YWTD-EGF-like domains 1 and 2 are required for the interaction with Wnt-frizzled complex. The YWTD-EGF-like domains 3 and 4 are required for the interaction with DKK1.,function:Essential for the Wnt/beta catenin signaling pathway, probably by acting as a coreceptor together with Frizzled for Wnt. Specific high-affinity receptor for DKK1 and DKK2, but not DKK3. The interaction with DKK1 blocks LRP6-mediated Wnt/beta catenin signaling via LRP6 removal via Kremen proteins-mediated endocytosis.,similarity:Belongs to the LDLR family.,similarity:Contains 20 LDL-receptor class B repeats.,similarity:Contains 3 LDL-receptor class A domains.,similarity:Contains 4 EGF-like domains.,subunit:Interacts with RSPO1 and RSPO3 (By similarity). Interacts with FZD5. Essential componen

---

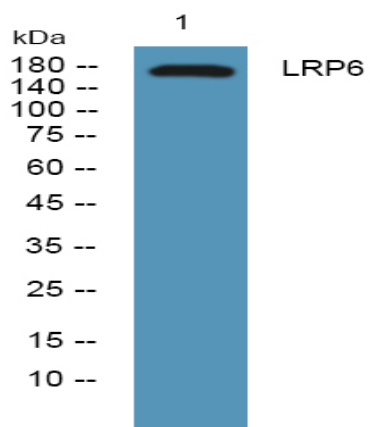
**Subcellular Location :** Cell membrane ; Single-pass type I membrane protein. Endoplasmic reticulum . Membrane raft . On Wnt signaling, undergoes a cycle of caveolin- or clathrin-mediated endocytosis and plasma membrane location. Released from the endoplasmic reticulum on palmitoylation. Mono-ubiquitination retains it in the endoplasmic reticulum in the absence of palmitoylation. On Wnt signaling, phosphorylated, aggregates and colocalizes with AXIN1 and GSK3B at the plasma membrane in LRP6-signalsomes. Chaperoned to the plasma membrane by MESD (By similarity). .

---

**Expression :** Widely coexpressed with LRP5 during embryogenesis and in adult tissues.

---

## Products Images



Western blot analysis of lysates from SH-SY5Y cells, primary antibody was diluted at 1:1000, 4° over night