

## Insulin Polyclonal Antibody

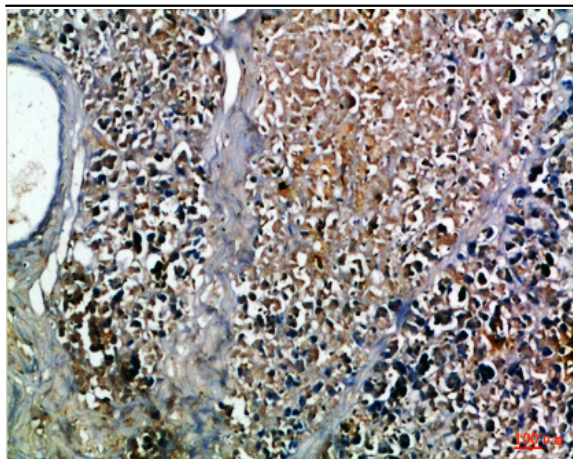
<b>Catalog No :</b>	YT6017
<b>Reactivity :</b>	Human;Mouse;Rat
<b>Applications :</b>	IHC;IF;ELISA
<b>Target :</b>	Insulin
<b>Fields :</b>	>>MAPK signaling pathway;>>Ras signaling pathway;>>Rap1 signaling pathway;>>cGMP-PKG signaling pathway;>>HIF-1 signaling pathway;>>FoxO signaling pathway;>>Phospholipase D signaling pathway;>>Oocyte meiosis;>>Autophagy - animal;>>mTOR signaling pathway;>>PI3K-Akt signaling pathway;>>AMPK signaling pathway;>>Longevity regulating pathway;>>Longevity regulating pathway - multiple species;>>Regulation of actin cytoskeleton;>>Insulin signaling pathway;>>Insulin secretion;>>Ovarian steroidogenesis;>>Progesterone-mediated oocyte maturation;>>Prolactin signaling pathway;>>Regulation of lipolysis in adipocytes;>>Type II diabetes mellitus;>>Insulin resistance;>>Non-alcoholic fatty liver disease;>>Type I diabetes mellitus;>>Maturity onset diabetes of the young;>>Aldosterone-regulated sodium reabsorption;>>Alzheimer disease;>>Prostate cancer;>>Diabetic cardiomyopathy
<b>Gene Name :</b>	INS
<b>Protein Name :</b>	Insulin [Cleaved into: Insulin B chain; Insulin A chain]
<b>Human Gene Id :</b>	3630
<b>Human Swiss Prot No :</b>	P01308
<b>Immunogen :</b>	Synthetic peptide from human protein at AA range: 30-70
<b>Specificity :</b>	The antibody detects endogenous Insulin
<b>Formulation :</b>	Liquid in PBS containing 50% glycerol, 0.5% BSA and 0.02% sodium azide.
<b>Source :</b>	Polyclonal, Rabbit,IgG
<b>Dilution :</b>	IHC 1:50-200, ELISA 1:10000-20000. IF 1:50-200

---

<b>Purification :</b>	The antibody was affinity-purified from rabbit antiserum by affinity-chromatography using epitope-specific immunogen.
<b>Concentration :</b>	1 mg/ml
<b>Storage Stability :</b>	-15°C to -25°C/1 year(Do not lower than -25°C)
<b>Cell Pathway :</b>	Oocyte meiosis;Regulation of autophagy;mTOR;Regulates Actin and Cytoskeleton;Insulin_Receptor;Progesterone-mediated oocyte maturation;Type II diabetes mellitus;Type I diabetes mellitus;Maturity onset
<b>Background :</b>	After removal of the precursor signal peptide, proinsulin is post-translationally cleaved into three peptides: the B chain and A chain peptides, which are covalently linked via two disulfide bonds to form insulin, and C-peptide. Binding of insulin to the insulin receptor (INSR) stimulates glucose uptake. A multitude of mutant alleles with phenotypic effects have been identified. There is a read-through gene, INS-IGF2, which overlaps with this gene at the 5' region and with the IGF2 gene at the 3' region. Alternative splicing results in multiple transcript variants. [provided by RefSeq, Jun 2010],
<b>Function :</b>	disease:Defects in INS are the cause of familial hyperproinsulinemia [MIM:176730].,function:Insulin decreases blood glucose concentration. It increases cell permeability to monosaccharides, amino acids and fatty acids. It accelerates glycolysis, the pentose phosphate cycle, and glycogen synthesis in liver.,function:Preptin undergoes glucose-mediated co-secretion with insulin, and acts as physiological amplifier of glucose-mediated insulin secretion. Exhibits osteogenic properties by increasing osteoblast mitogenic activity through phosphoactivation of MAPK1 and MAPK3.,function:The insulin-like growth factors possess growth-promoting activity. In vitro, they are potent mitogens for cultured cells. IGF-II is influenced by placental lactogen and may play a role in fetal development.,mass spectrometry: PubMed:12586351; PubMed:15359740,online information:Clinical information on Eli Lilly insu
<b>Subcellular Location :</b>	Secreted.
<b>Expression :</b>	Blood,Liver,Muscle,Pancreas,

---

## Products Images



Immunohistochemical analysis of paraffin-embedded Human-pancreas, antibody was diluted at 1:100