

CD70 Polyclonal Antibody

Catalog No :	YT6031
Reactivity :	Human;Mouse
Applications :	IHC;IF;ELISA
Target :	CD70
Fields :	>>Cytokine-cytokine receptor interaction
Gene Name :	CD70 CD27L CD27LG TNFSF7
Protein Name :	CD70 antigen (CD27 ligand) (CD27-L) (Tumor necrosis factor ligand superfamily member 7) (CD antigen CD70)
Human Gene Id :	970
Human Swiss Prot No :	P32970
Mouse Gene Id :	21948
Mouse Swiss Prot No :	O55237
Immunogen :	Synthetic peptide from human protein at AA range: 150-193
Specificity :	The antibody detects endogenous CD70
Formulation :	Liquid in PBS containing 50% glycerol, 0.5% BSA and 0.02% sodium azide.
Source :	Polyclonal, Rabbit,IgG
Dilution :	IHC 1:50-200, ELISA 1:10000-20000. IF 1:50-200
Purification :	The antibody was affinity-purified from rabbit antiserum by affinity-chromatography using epitope-specific immunogen.
Concentration :	1 mg/ml

Storage Stability : -15°C to -25°C/1 year(Do not lower than -25°C)

Cell Pathway : Cytokine-cytokine receptor interaction;

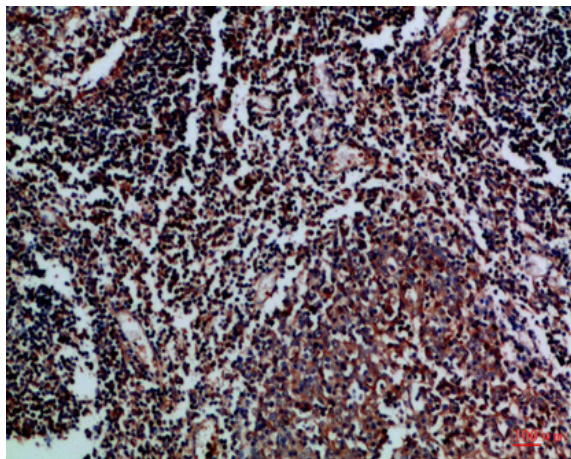
Background : The protein encoded by this gene is a cytokine that belongs to the tumor necrosis factor (TNF) ligand family. This cytokine is a ligand for TNFRSF27/CD27. It is a surface antigen on activated, but not on resting, T and B lymphocytes. It induces proliferation of costimulated T cells, enhances the generation of cytolytic T cells, and contributes to T cell activation. This cytokine is also reported to play a role in regulating B-cell activation, cytotoxic function of natural killer cells, and immunoglobulin synthesis. [provided by RefSeq, Jul 2008],

Function : function:Cytokine that binds to CD27. Plays a role in T-cell activation. Induces the proliferation of costimulated T-cells and enhances the generation of cytolytic T-cells.,similarity:Belongs to the tumor necrosis factor family.,subunit:Homotrimer.,

Subcellular Location : Membrane ; Single-pass type II membrane protein .

Expression : B-cell,Kidney,

Products Images



Immunohistochemical analysis of paraffin-embedded Human-tonsil, antibody was diluted at 1:100