

LWS Polyclonal Antibody

Catalog No :	YT6071
Reactivity :	Human;Rat;Mouse
Applications :	WB;ELISA
Target :	LWS
Fields :	>>PPAR signaling pathway;>>Th17 cell differentiation;>>Thyroid hormone signaling pathway;>>Adipocytokine signaling pathway;>>Parathyroid hormone synthesis, secretion and action;>>Pathways in cancer;>>Transcriptional misregulation in cancer;>>Chemical carcinogenesis - receptor activation;>>Thyroid cancer;>>Small cell lung cancer;>>Non-small cell lung cancer;>>Gastric cancer;>>Lipid and atherosclerosis
Gene Name :	RXRG NR2B3
Protein Name :	LWS
Human Gene Id :	6258
Human Swiss Prot No :	P48443
Mouse Gene Id :	20183
Mouse Swiss Prot No :	P28705
Immunogen :	Synthesized peptide derived from human LWS. at AA range: 380-420
Specificity :	This antibody detects endogenous levels of LWS
Formulation :	Liquid in PBS containing 50% glycerol, 0.5% BSA and 0.02% sodium azide.
Source :	Polyclonal, Rabbit,IgG
Dilution :	WB 1:500-2000, ELISA 1:10000-20000
Purification :	The antibody was affinity-purified from rabbit antiserum by affinity-

chromatography using epitope-specific immunogen.

Concentration : 1 mg/ml

Storage Stability : -15°C to -25°C/1 year(Do not lower than -25°C)

Observed Band : 50kD

Cell Pathway : PPAR;Adipocytokine;Pathways in cancer;Thyroid cancer;Small cell lung cancer;Non-small cell lung cancer;

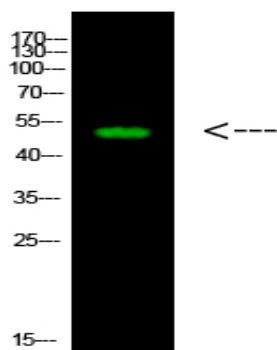
Background : retinoid X receptor gamma(RXRG) Homo sapiens This gene encodes a member of the retinoid X receptor (RXR) family of nuclear receptors which are involved in mediating the antiproliferative effects of retinoic acid (RA). This receptor forms dimers with the retinoic acid, thyroid hormone, and vitamin D receptors, increasing both DNA binding and transcriptional function on their respective response elements. This gene is expressed at significantly lower levels in non-small cell lung cancer cells. Alternatively spliced transcript variants have been described. [provided by RefSeq, Jun 2010],

Function : caution:The sequence shown here is derived from an Ensembl automatic analysis pipeline and should be considered as preliminary data.,domain:Composed of three domains: a modulating N-terminal domain, a DNA-binding domain and a C-terminal steroid-binding domain.,function:Nuclear hormone receptor. Involved in the retinoic acid response pathway. Binds 9-cis retinoic acid (9C-RA).,similarity:Belongs to the nuclear hormone receptor family. NR2 subfamily.,similarity:Contains 1 nuclear receptor DNA-binding domain.,

Subcellular Location : Nucleus . Cytoplasm .

Expression : Expressed in aortic endothelial cells (at protein level).

Products Images



Western Blot analysis of 1, mouse-heart cells using primary antibody diluted at 1:1000 (4 °C overnight). Secondary antibody: Goat Anti-rabbit IgG IRDye 800 (diluted at 1:5000, 25 °C, 1 hour) cells nucleus extracted by Minute TM Cytoplasmic and Nuclear Fractionation kit (SC-003, Inventbiotech, MN, USA).