

## CD82 Polyclonal Antibody

<b>Catalog No :</b>	YN0174
<b>Reactivity :</b>	Human;Rat;Mouse;
<b>Applications :</b>	WB;ELISA
<b>Target :</b>	CD82
<b>Fields :</b>	>>p53 signaling pathway
<b>Gene Name :</b>	CD82 KAI1 SAR2 ST6 TSPAN27
<b>Protein Name :</b>	CD82 antigen (C33 antigen) (IA4) (Inducible membrane protein R2) (Metastasis suppressor Kangai-1) (Suppressor of tumorigenicity 6 protein) (Tetraspanin-27) (Tspan-27) (CD antigen CD82)
<b>Human Gene Id :</b>	3732
<b>Human Swiss Prot No :</b>	P27701
<b>Mouse Swiss Prot No :</b>	P40237
<b>Rat Swiss Prot No :</b>	O70352
<b>Immunogen :</b>	Synthesized peptide derived from human protein . at AA range: 120-200
<b>Specificity :</b>	CD82 Polyclonal Antibody detects endogenous levels of protein.
<b>Formulation :</b>	Liquid in PBS containing 50% glycerol, and 0.02% sodium azide.
<b>Source :</b>	Polyclonal, Rabbit,IgG
<b>Dilution :</b>	WB 1:500-2000 ELISA 1:5000-20000
<b>Purification :</b>	The antibody was affinity-purified from rabbit antiserum by affinity-chromatography using epitope-specific immunogen.
<b>Concentration :</b>	1 mg/ml

**Storage Stability :** -15°C to -25°C/1 year(Do not lower than -25°C)

**Observed Band :** 29kD

**Cell Pathway :** p53;

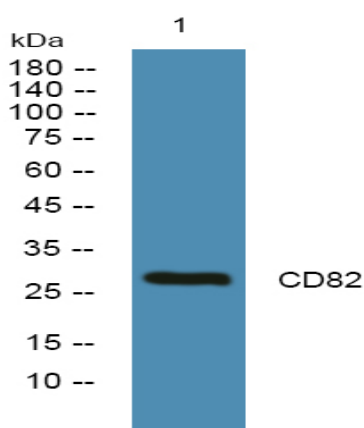
**Background :** This metastasis suppressor gene product is a membrane glycoprotein that is a member of the transmembrane 4 superfamily. Expression of this gene has been shown to be downregulated in tumor progression of human cancers and can be activated by p53 through a consensus binding sequence in the promoter. Its expression and that of p53 are strongly correlated, and the loss of expression of these two proteins is associated with poor survival for prostate cancer patients. Two alternatively spliced transcript variants encoding distinct isoforms have been found for this gene. [provided by RefSeq, Jul 2008],

**Function :** function:Associates with CD4 or CD8 and delivers costimulatory signals for the TCR/CD3 pathway.,similarity:Belongs to the tetraspanin (TM4SF) family.,subunit:Interacts directly with IGSF8.,tissue specificity:Lymphoid specific.,

**Subcellular Location :** Cell membrane ; Multi-pass membrane protein .

**Expression :** Lymphoid specific.

## Products Images



Western blot analysis of lysates from A431 cells, primary antibody was diluted at 1:1000, 4° over night