

RFA1 rabbit pAb

| | |
|------------------------------|---|
| Catalog No : | YT7984 |
| Reactivity : | Human;Monkey;Mouse;Rat |
| Applications : | WB;ELISA;IHC |
| Target : | RFA1 |
| Fields : | >>DNA replication;>>Nucleotide excision repair;>>Mismatch repair;>>Homologous recombination;>>Fanconi anemia pathway |
| Gene Name : | RPA1 REPA1 RPA70 |
| Protein Name : | RFA1 |
| Human Gene Id : | 6117 |
| Human Swiss Prot No : | P27694 |
| Mouse Gene Id : | 68275 |
| Mouse Swiss Prot No : | Q8VEE4 |
| Immunogen : | Synthesized peptide derived from human RFA1 |
| Specificity : | This antibody detects endogenous levels of Human,Monkey,Mouse,Rat RFA1 |
| Formulation : | Liquid in PBS containing 50% glycerol, 0.5% BSA and 0.02% sodium azide. |
| Source : | Polyclonal, Rabbit,IgG |
| Dilution : | WB 1:500-2000;IHC 1:50-300; ELISA 2000-20000 |
| Purification : | The antibody was affinity-purified from rabbit antiserum by affinity-chromatography using epitope-specific immunogen. |
| Concentration : | 1 mg/ml |

Storage Stability : -15°C to -25°C/1 year (Do not lower than -25°C)

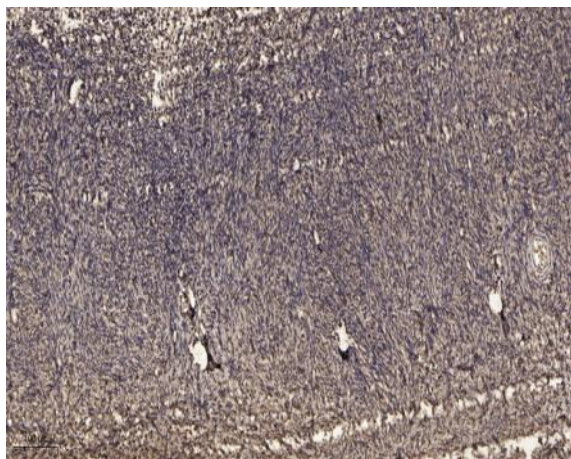
Molecularweight : 68kD

Background : function: It participates in a very early step in initiation. RP-A is a single-stranded DNA-binding protein. Absolutely required for simian virus 40 DNA replication in vitro., PTM: Phosphorylated upon DNA damage, probably by ATM or ATR., similarity: Belongs to the replication factor A protein 1 family., subunit: Heterotrimer of 70, 32 and 14 kDa chains. The DNA-binding activity may reside exclusively on the 70 kDa subunit. Interacts with RIP and XPA. Interacts with RPA4.,

Function : function: It participates in a very early step in initiation. RP-A is a single-stranded DNA-binding protein. Absolutely required for simian virus 40 DNA replication in vitro., PTM: Phosphorylated upon DNA damage, probably by ATM or ATR., similarity: Belongs to the replication factor A protein 1 family., subunit: Heterotrimer of 70, 32 and 14 kDa chains. The DNA-binding activity may reside exclusively on the 70 kDa subunit. Interacts with RIP and XPA. Interacts with RPA4.,

Subcellular Location : Nucleus . Nucleus, PML body . Enriched in PML bodies in cells displaying alternative lengthening of their telomeres. .

Products Images



Immunohistochemical analysis of paraffin-embedded human oophoroma. 1, Antibody was diluted at 1:200 (4° overnight). 2, Tris-EDTA, pH 9.0 was used for antigen retrieval. 3, Secondary antibody was diluted at 1:200 (room temperature, 45min).