

RAB25 rabbit pAb

Catalog No :	YT7805
Reactivity :	Human;Rat;Mouse;
Applications :	WB;ELISA;IHC
Target :	RAB25
Gene Name :	RAB25 CATX8
Protein Name :	RAB25
Human Gene Id :	57111
Human Swiss Prot No :	P57735
Mouse Gene Id :	53868
Mouse Swiss Prot No :	Q9WTL2
Immunogen :	Synthesized peptide derived from human RAB25 AA range: 80-160
Specificity :	This antibody detects endogenous levels of Human RAB25
Formulation :	Liquid in PBS containing 50% glycerol, 0.5% BSA and 0.02% sodium azide.
Source :	Polyclonal, Rabbit,IgG
Dilution :	WB 1:500-2000;IHC 1:50-300; ELISA 2000-20000
Purification :	The antibody was affinity-purified from rabbit antiserum by affinity-chromatography using epitope-specific immunogen.
Concentration :	1 mg/ml
Storage Stability :	-15°C to -25°C/1 year(Do not lower than -25°C)

Molecularweight : 23kD

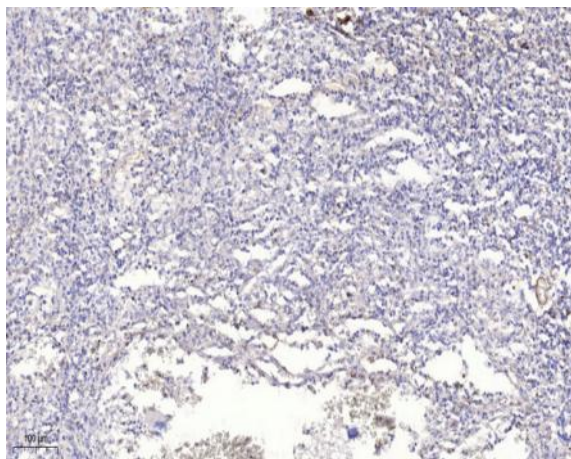
Background : The protein encoded by this gene is a member of the RAS superfamily of small GTPases. The encoded protein is involved in membrane trafficking and cell survival. This gene has been found to be a tumor suppressor and an oncogene, depending on the context. Two variants, one protein-coding and the other not, have been found for this gene. [provided by RefSeq, Nov 2015],

Function : function:May selectively regulate the apical recycling and/or transcytotic pathways.,similarity:Belongs to the small GTPase superfamily. Rab family.,subunit:Interacts with RAB11FIP1, RAB11FIP2, RAB11FIP3 and RAB11FIP4.,

Subcellular Location : Cell membrane ; Lipid-anchor ; Cytoplasmic side . Cell projection, pseudopodium membrane . Cytoplasmic vesicle . Colocalizes with integrin alpha-V/beta-1 in vesicles at the pseudopodial tips. .

Expression : Expressed in ovarian epithelium (NOE) and breast tissue. Expressed in ovarian cancer; expression is increased relative to NOE cells. Expression in ovarian cancer is stage dependent, with stage III and stage IV showing higher levels than early stage cancers. Expressed in breast cancer; expression is increased relative to normal breast tissue.

Products Images



Immunohistochemical analysis of paraffin-embedded human spleen. 1, Antibody was diluted at 1:200(4° overnight). 2, Tris-EDTA,pH9.0 was used for antigen retrieval. 3,Secondary antibody was diluted at 1:200(room temperature, 45min).